

Product datasheet for **TA313096**

RON (MST1R) Rabbit Polyclonal Antibody

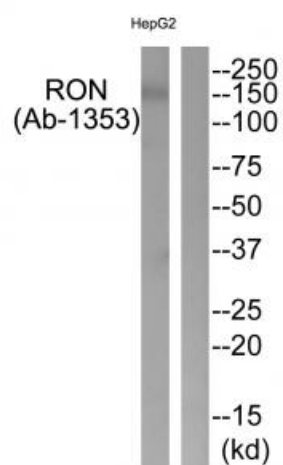
Product data:

Product Type:	Primary Antibodies
Applications:	WB
Recommended Dilution:	WB: 1:500~1:3000, ELISA: 1:10000
Reactivity:	Human, Mouse
Host:	Rabbit
Isotype:	IgG
Clonality:	Polyclonal
Immunogen:	The antiserum was produced against synthesized peptide derived from Internal of human MST1R.
Formulation:	Phosphate buffered saline (without Mg ²⁺ and Ca ²⁺), pH 7.4, 150mM NaCl, 0.02% sodium azide and 50% glycerol.
Concentration:	lot specific
Purification:	The antibody was affinity-purified from rabbit antiserum by affinity-chromatography using epitope-specific immunogen.
Conjugation:	Unconjugated
Storage:	Store at -20°C as received.
Stability:	Stable for 12 months from date of receipt.
Gene Name:	macrophage stimulating 1 receptor
Database Link:	NP_002438 Entrez Gene 19882 Mouse Entrez Gene 4486 Human Q04912
Synonyms:	CD136; CDw136; PTK8; RON
Note:	RON (Ab-1353) antibody detects endogenous levels of total MST1R protein.
Protein Families:	Druggable Genome, ES Cell Differentiation/IPS, Protein Kinase, Transmembrane



[View online »](#)

Product images:



Western blot analysis of extracts from HepG2 cells, using RON (Ab-1353) antibody. The lane on the right is treated with the synthesized peptide.