

Product datasheet for **TA313094**

p95 NBS1 (NBN) Rabbit Polyclonal Antibody

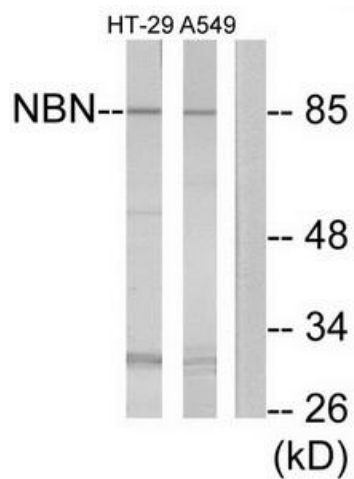
Product data:

| | |
|------------------------------|--|
| Product Type: | Primary Antibodies |
| Applications: | WB |
| Recommended Dilution: | WB: 1:500~1:3000, ELISA: 1:20000 |
| Reactivity: | Human, Mouse, Rat |
| Host: | Rabbit |
| Isotype: | IgG |
| Clonality: | Polyclonal |
| Immunogen: | The antiserum was produced against synthesized peptide derived from internal of human NBN. |
| Formulation: | Phosphate buffered saline (without Mg ²⁺ and Ca ²⁺), pH 7.4, 150mM NaCl, 0.02% sodium azide and 50% glycerol. |
| Concentration: | lot specific |
| Purification: | The antibody was affinity-purified from rabbit antiserum by affinity-chromatography using epitope-specific immunogen. |
| Conjugation: | Unconjugated |
| Storage: | Store at -20°C as received. |
| Stability: | Stable for 12 months from date of receipt. |
| Gene Name: | nibrin |
| Database Link: | NP_002476 Entrez Gene 27354 MouseEntrez Gene 85482 RatEntrez Gene 4683 Human O60934 |
| Synonyms: | AT-V1; AT-V2; ATV; NBS; NBS1; P95 |
| Note: | NBN antibody detects endogenous levels of total NBN protein. |
| Protein Families: | Druggable Genome |
| Protein Pathways: | Homologous recombination |



[View online »](#)

Product images:



Western blot analysis of extracts from HT-29 cells and A549 cells, using NBN antibody. The lane on the right is treated with the synthesized peptide.