

Product datasheet for **TA313091**

PAR4 (PAWR) Rabbit Polyclonal Antibody

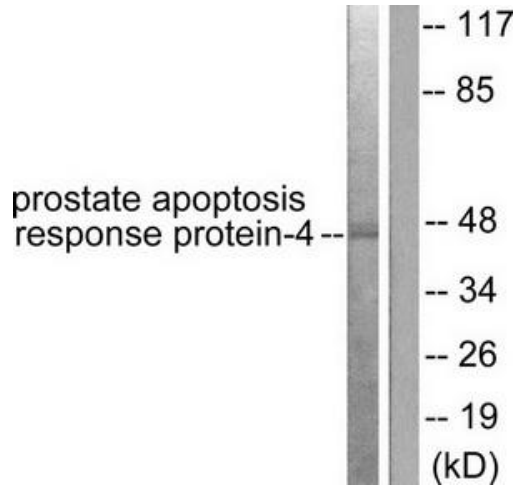
Product data:

Product Type:	Primary Antibodies
Applications:	IHC, WB
Recommended Dilution:	WB: 1:500~1:3000, IHC: 1:50~1:100, ELISA: 1:10000
Reactivity:	Human, Mouse, Rat
Host:	Rabbit
Isotype:	IgG
Clonality:	Polyclonal
Immunogen:	The antiserum was produced against synthesized peptide derived from human prostate apoptosis response protein-4.
Formulation:	Phosphate buffered saline (without Mg ²⁺ and Ca ²⁺), pH 7.4, 150mM NaCl, 0.02% sodium azide and 50% glycerol.
Concentration:	lot specific
Purification:	The antibody was affinity-purified from rabbit antiserum by affinity-chromatography using epitope-specific immunogen.
Conjugation:	Unconjugated
Storage:	Store at -20°C as received.
Stability:	Stable for 12 months from date of receipt.
Gene Name:	pro-apoptotic WT1 regulator
Database Link:	NP_002574 Entrez Gene 64513 Rat Entrez Gene 114774 Mouse Entrez Gene 5074 Human Q96IZ0
Synonyms:	Par-4; PAR4
Note:	Prostate Apoptosis Response Protein-4 antibody detects endogenous levels of total prostate apoptosis response protein-4 protein.
Protein Families:	Druggable Genome, Transcription Factors

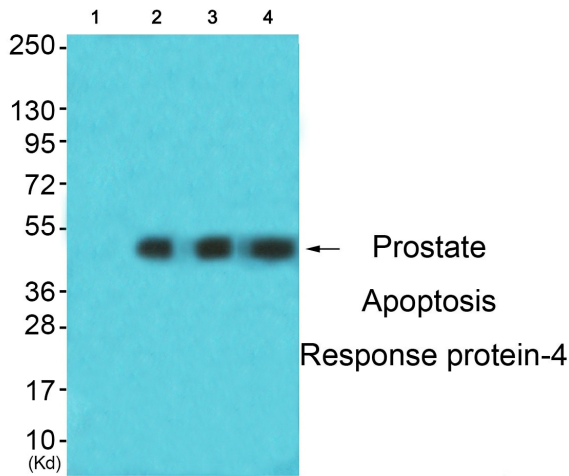


[View online »](#)

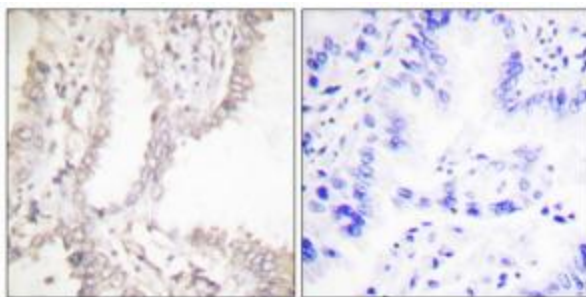
Product images:



Western blot analysis of extracts from NIH/3T3 cells, using Prostate Apoptosis Response Protein-4 antibody (#TA313091). The lane on the right is treated with the synthesized peptide.



Western blot analysis of extracts from 293 cells. The lane on the left is treated with synthesized peptide.



Immunohistochemical analysis of paraffin-embedded human lung carcinoma tissue using Prostate Apoptosis Response Protein-4 antibody (#TA313091). The picture on the right is treated with the synthesized peptide.