

## Product datasheet for **TA313086**

### Phospholipase C gamma 1 (PLCG1) Rabbit Polyclonal Antibody

#### Product data:

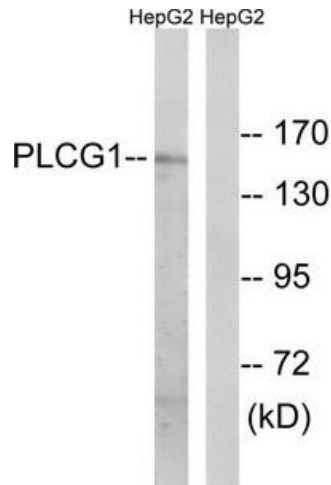
Product Type:	Primary Antibodies
Applications:	IHC, WB
Recommended Dilution:	WB: 1:500~1:3000, IHC: 1:50~1:100, ELISA: 1:10000
Reactivity:	Human, Mouse, Rat
Host:	Rabbit
Isotype:	IgG
Clonality:	Polyclonal
Immunogen:	The antiserum was produced against synthesized non-phosphopeptide derived from human PLCG1 around the phosphorylation site of tyrosine 771 (P-D-Y-G-A).
Formulation:	Phosphate buffered saline (without Mg <sup>2+</sup> and Ca <sup>2+</sup> ), pH 7.4, 150mM NaCl, 0.02% sodium azide and 50% glycerol.
Concentration:	lot specific
Purification:	The antibody was affinity-purified from rabbit antiserum by affinity-chromatography using epitope-specific immunogen.
Conjugation:	Unconjugated
Storage:	Store at -20°C as received.
Stability:	Stable for 12 months from date of receipt.
Gene Name:	phospholipase C gamma 1
Database Link:	<a href="#">NP_002651</a> <a href="#">Entrez Gene 18803 Mouse</a> <a href="#">Entrez Gene 25738 Rat</a> <a href="#">Entrez Gene 5335 Human</a> <a href="#">P19174</a>
Synonyms:	NCKAP3; PLC-II; PLC1; PLC148; PLCgamma1
Note:	PLCG1 (Ab-771) antibody detects endogenous levels of total PLCG1 protein.
Protein Families:	Druggable Genome



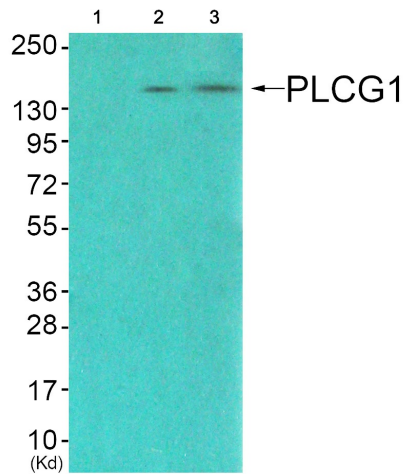
[View online »](#)

**Protein Pathways:**

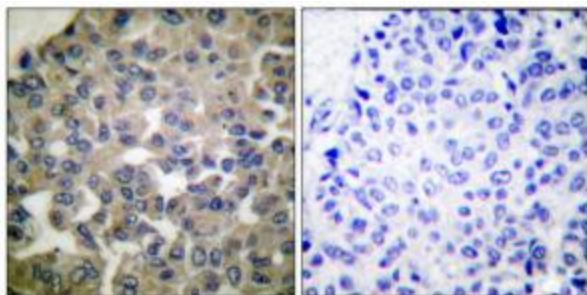
Calcium signaling pathway, Epithelial cell signaling in Helicobacter pylori infection, ErbB signaling pathway, Fc epsilon RI signaling pathway, Fc gamma R-mediated phagocytosis, Glioma, Inositol phosphate metabolism, Leukocyte transendothelial migration, Metabolic pathways, Natural killer cell mediated cytotoxicity, Neurotrophin signaling pathway, Non-small cell lung cancer, Pathways in cancer, Phosphatidylinositol signaling system, T cell receptor signaling pathway, VEGF signaling pathway, Vibrio cholerae infection

**Product images:**


Western blot analysis of extracts from COS7 cells treated with EGF (200ng/ml, 30min), using PLCG1 (Ab-771) antibody (#TA313086, Line 1 and 2). The lane on the right is treated with the synthesized peptide.



Western blot analysis of extracts from COS7 cells (Lane 2), and JK cells (Lane 3), using PLCG1 (Ab-771) Antibody. The lane on the left is treated with synthesized peptide.



Immunohistochemical analysis of paraffin-embedded human breast carcinoma tissue using PLCG1 (Ab-771) antibody (#TA313086). The picture on the right is treated with the synthesized peptide.