

## Product datasheet for **TA313084**

### Phospholipase C gamma 1 (PLCG1) Rabbit Polyclonal Antibody

#### Product data:

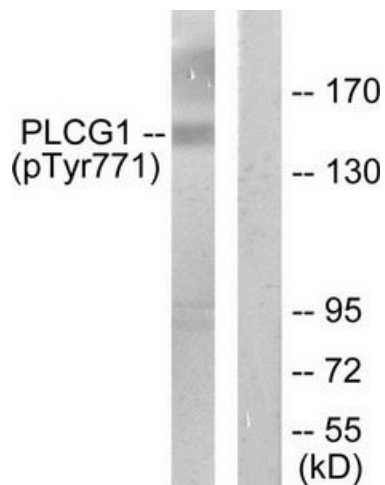
Product Type:	Primary Antibodies
Applications:	IHC, WB
Recommended Dilution:	WB: 1: 500~1:1000, IHC: 1:50~1:100, ELISA: 1:40000
Reactivity:	Human, Mouse, Rat
Modifications:	Phospho-specific
Host:	Rabbit
Isotype:	IgG
Clonality:	Polyclonal
Immunogen:	The antiserum was produced against synthesized phosphopeptide derived from human PLCG1 around the phosphorylation site of tyrosine 771 (P-D-YP-G-A)
Formulation:	Phosphate buffered saline (without Mg <sup>2+</sup> and Ca <sup>2+</sup> ), pH 7.4, 150mM NaCl, 0.02% sodium azide and 50% glycerol.
Concentration:	lot specific
Purification:	The antibody was affinity-purified from rabbit antiserum by affinity-chromatography using epitope-specific immunogen.
Conjugation:	Unconjugated
Storage:	Store at -20°C as received.
Stability:	Stable for 12 months from date of receipt.
Gene Name:	phospholipase C gamma 1
Database Link:	<a href="#">NP_002651</a> <a href="#">Entrez Gene 18803 Mouse</a> <a href="#">Entrez Gene 25738 Rat</a> <a href="#">Entrez Gene 5335 Human</a> <a href="#">P19174</a>
Synonyms:	NCKAP3; PLC-II; PLC1; PLC148; PLCgamma1
Note:	PLCG1 (phospho-Tyr771) antibody detects endogenous levels of PLCG1 only when phosphorylated at tyrosine 771.
Protein Families:	Druggable Genome



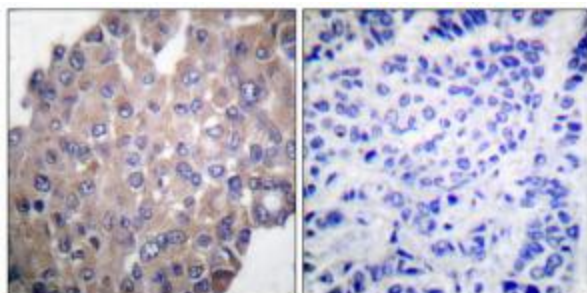
[View online »](#)

**Protein Pathways:**

Calcium signaling pathway, Epithelial cell signaling in Helicobacter pylori infection, ErbB signaling pathway, Fc epsilon RI signaling pathway, Fc gamma R-mediated phagocytosis, Glioma, Inositol phosphate metabolism, Leukocyte transendothelial migration, Metabolic pathways, Natural killer cell mediated cytotoxicity, Neurotrophin signaling pathway, Non-small cell lung cancer, Pathways in cancer, Phosphatidylinositol signaling system, T cell receptor signaling pathway, VEGF signaling pathway, Vibrio cholerae infection

**Product images:**


Western blot analysis of extracts from COS7 cells treated with EGF (200ng/ml, 30mins), using PLCG1 (phospho-Tyr771) antibody. The lane on the right is treated with the synthesized peptide.



Immunohistochemical analysis of paraffin-embedded human breast carcinoma tissue using PLCG1 (phospho-Tyr771) antibody. The picture on the right is treated with the synthesized peptide.