

Product datasheet for **TA313082**

Oct-2 (POU2F2) Rabbit Polyclonal Antibody

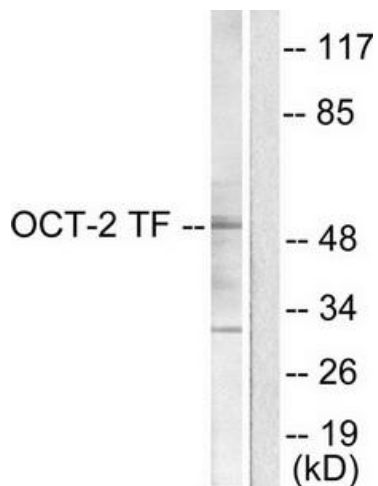
Product data:

Product Type:	Primary Antibodies
Applications:	WB
Recommended Dilution:	WB: 1:500~1:3000, IF: 1:100~1:500, ELISA: 1:5000
Reactivity:	Human, Mouse, Rat
Host:	Rabbit
Isotype:	IgG
Clonality:	Polyclonal
Immunogen:	The antiserum was produced against synthesized peptide derived from human OCT2 antibody.
Formulation:	Phosphate buffered saline (without Mg ²⁺ and Ca ²⁺), pH 7.4, 150mM NaCl, 0.02% sodium azide and 50% glycerol.
Concentration:	lot specific
Purification:	The antibody was affinity-purified from rabbit antiserum by affinity-chromatography using epitope-specific immunogen.
Conjugation:	Unconjugated
Storage:	Store at -20°C as received.
Stability:	Stable for 12 months from date of receipt.
Gene Name:	POU class 2 homeobox 2
Database Link:	NP_002689 Entrez Gene 18987 Mouse Entrez Gene 117058 Rat Entrez Gene 5452 Human P09086
Synonyms:	Oct-2; OCT2; OTF2
Note:	OCT2 antibody detects endogenous levels of total OCT2 protein.
Protein Families:	Transcription Factors

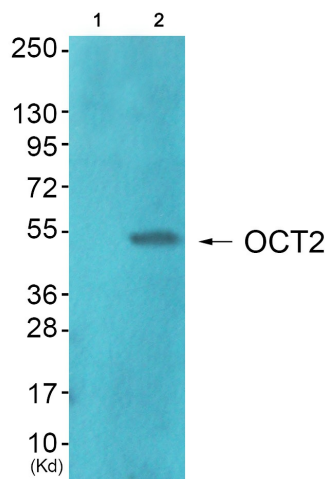


[View online »](#)

Product images:



Western blot analysis of extracts from COS7 cells, using OCT2 antibody (#TA313082). The lane on the right is treated with the synthesized peptide.



Western blot analysis of extracts from JK cells (Lane 2), using OCT2 Antibody. The lane on the left is treated with synthesized peptide.