

Product datasheet for **TA313078**

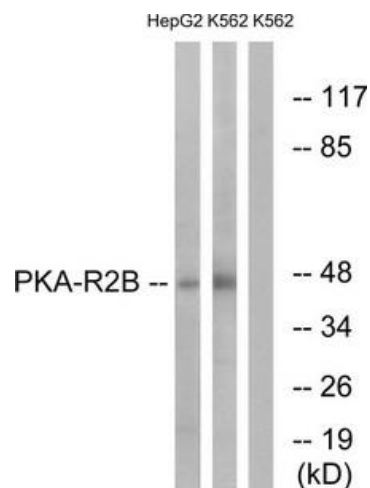
PRKAR2B Rabbit Polyclonal Antibody

Product data:

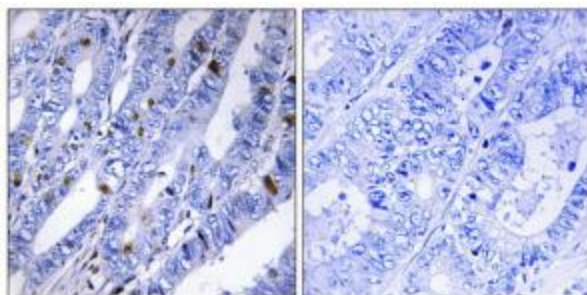
Product Type:	Primary Antibodies
Applications:	IHC, WB
Recommended Dilution:	WB: 1:500~1:3000, IHC: 1:50~1:100, ELISA: 1:1000
Reactivity:	Human, Mouse, Rat
Host:	Rabbit
Isotype:	IgG
Clonality:	Polyclonal
Immunogen:	The antiserum was produced against synthesized non-phosphopeptide derived from human PKA-R2 β around the phosphorylation site of serine 113 (R-A-SP-V-C).
Formulation:	Phosphate buffered saline (without Mg ²⁺ and Ca ²⁺), pH 7.4, 150mM NaCl, 0.02% sodium azide and 50% glycerol.
Concentration:	lot specific
Purification:	The antibody was affinity-purified from rabbit antiserum by affinity-chromatography using epitope-specific immunogen.
Conjugation:	Unconjugated
Storage:	Store at -20°C as received.
Stability:	Stable for 12 months from date of receipt.
Gene Name:	protein kinase cAMP-dependent type II regulatory subunit beta
Database Link:	NP_002727 Entrez Gene 19088 Mouse Entrez Gene 24679 Rat Entrez Gene 5577 Human P31323
Synonyms:	PRKAR2; RII-BETA
Note:	PKA-R2. (Ab-113) antibody detects endogenous levels of total PKA-R2. protein.
Protein Families:	Druggable Genome
Protein Pathways:	Apoptosis, Insulin signaling pathway



[View online »](#)

Product images:

Western blot analysis of extracts from HepG2 cells and K562 cells, using PKA-R2 β (Ab-113) antibody. The lane on the right is treated with the synthesized peptide.



Immunohistochemistry analysis of paraffin-embedded human colon carcinoma tissue using PKA-R2 β (Ab-113) antibody. The picture on the right is treated with the synthesized peptide.