

Product datasheet for **TA313071**

PKN1 Rabbit Polyclonal Antibody

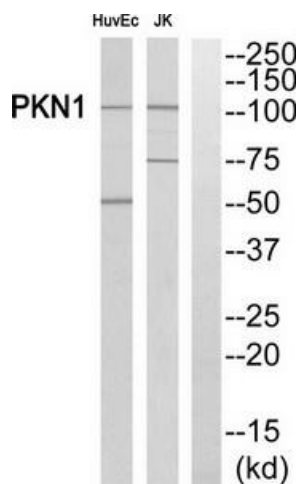
Product data:

Product Type:	Primary Antibodies
Applications:	WB
Recommended Dilution:	WB: 1:500~1:3000, ELISA: 1:20000
Reactivity:	Human, Mouse, Rat
Host:	Rabbit
Isotype:	IgG
Clonality:	Polyclonal
Immunogen:	The antiserum was produced against synthesized peptide derived from Internal of human PKN1/PRK1.
Formulation:	Phosphate buffered saline (without Mg ²⁺ and Ca ²⁺), pH 7.4, 150mM NaCl, 0.02% sodium azide and 50% glycerol.
Concentration:	lot specific
Purification:	The antibody was affinity-purified from rabbit antiserum by affinity-chromatography using epitope-specific immunogen.
Conjugation:	Unconjugated
Storage:	Store at -20°C as received.
Stability:	Stable for 12 months from date of receipt.
Gene Name:	protein kinase N1
Database Link:	NP_002732 Entrez Gene 29355 Rat Entrez Gene 320795 Mouse Entrez Gene 5585 Human Q16512
Synonyms:	DBK; PAK-1; PAK1; PKN; PKN-ALPHA; PRK1; PRKCL1
Note:	PKN1/PRK1 antibody detects endogenous levels of total PKN1/PRK1 protein.
Protein Families:	Druggable Genome, Protein Kinase



[View online »](#)

Product images:



Western blot analysis of extracts from Jurkat/HuvEc cells, using PKN1/PRK1 antibody. The lane on the right is treated with the synthesized peptide.