

Product datasheet for **TA313070**

PKC gamma (PRKCG) Rabbit Polyclonal Antibody

Product data:

Product Type:	Primary Antibodies
Applications:	WB
Recommended Dilution:	WB: 1:500~1:3000, ELISA: 1:40000
Reactivity:	Mouse, Human, Rat
Host:	Rabbit
Isotype:	IgG
Clonality:	Polyclonal
Immunogen:	The antiserum was produced against synthesized peptide derived from internal of human PRKCG.
Formulation:	Phosphate buffered saline (without Mg ²⁺ and Ca ²⁺), pH 7.4, 150mM NaCl, 0.02% sodium azide and 50% glycerol.
Concentration:	lot specific
Purification:	The antibody was affinity-purified from rabbit antiserum by affinity-chromatography using epitope-specific immunogen.
Conjugation:	Unconjugated
Storage:	Store at -20°C as received.
Stability:	Stable for 12 months from date of receipt.
Gene Name:	protein kinase C gamma
Database Link:	NP_002730 Entrez Gene 18752 MouseEntrez Gene 24681 RatEntrez Gene 5582 Human P05129
Synonyms:	PKC-gamma; PKCC; PKCG; SCA14
Note:	PRKCG antibody detects endogenous levels of total PRKCG protein.
Protein Families:	Druggable Genome, Protein Kinase

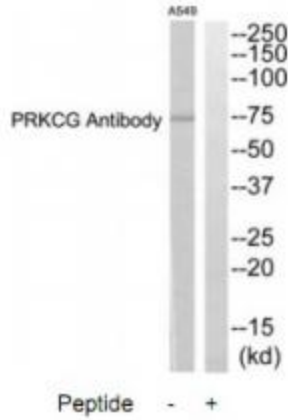


[View online »](#)

Protein Pathways:

Calcium signaling pathway, ErbB signaling pathway, Fc gamma R-mediated phagocytosis, Focal adhesion, Gap junction, Glioma, Leukocyte transendothelial migration, Long-term depression, Long-term potentiation, MAPK signaling pathway, Melanogenesis, Natural killer cell mediated cytotoxicity, Non-small cell lung cancer, Pathways in cancer, Phosphatidylinositol signaling system, Tight junction, Vascular smooth muscle contraction, VEGF signaling pathway, Vibrio cholerae infection, Wnt signaling pathway

Product images:



Western blot analysis of extracts from A549 cells, using PRKCG antibody. The lane on the right is treated with the synthesized peptide.