

Product datasheet for **TA313036**

gamma Synuclein (SNCG) Rabbit Polyclonal Antibody

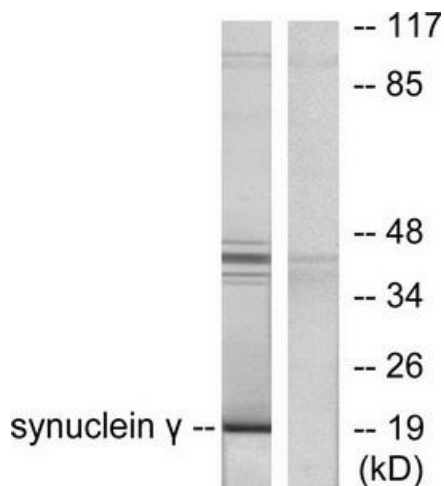
Product data:

Product Type:	Primary Antibodies
Applications:	IHC, WB
Recommended Dilution:	WB: 1:500~1:3000, IHC: 1:50~1:100, ELISA: 1:10000
Reactivity:	Human
Host:	Rabbit
Isotype:	IgG
Clonality:	Polyclonal
Immunogen:	The antiserum was produced against synthesized peptide derived from human synuclein ?.
Formulation:	Phosphate buffered saline (without Mg ²⁺ and Ca ²⁺), pH 7.4, 150mM NaCl, 0.02% sodium azide and 50% glycerol.
Concentration:	lot specific
Purification:	The antibody was affinity-purified from rabbit antiserum by affinity-chromatography using epitope-specific immunogen.
Conjugation:	Unconjugated
Storage:	Store at -20°C as received.
Stability:	Stable for 12 months from date of receipt.
Gene Name:	synuclein gamma
Database Link:	NP_003078 Entrez Gene 6623 Human O76070
Synonyms:	BCSG1; SR
Note:	Synuclein . antibody detects endogenous levels of total synuclein . protein.

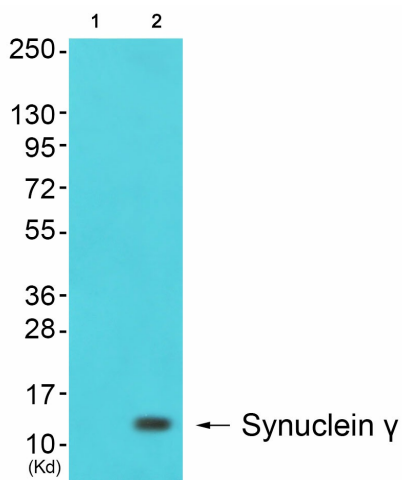


[View online »](#)

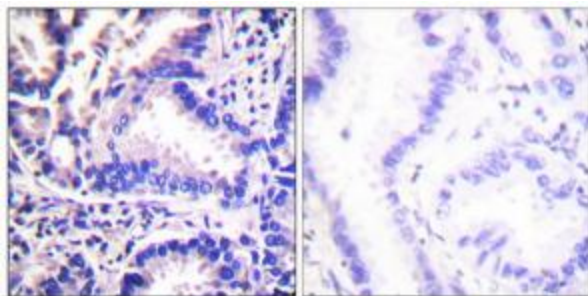
Product images:



Western blot analysis of extracts from HT29 cells, using Synuclein γ Antibody (#TA313036). The lane on the right is treated with the synthesized peptide.



Western blot analysis of extracts from cos-7 cells (Lane 2), using Synuclein γ Antibody. The lane on the left is treated with synthesized peptide.



Immunohistochemical analysis of paraffin-embedded human lung carcinoma tissue using Synuclein γ Antibody (#TA313036). The picture on the right is treated with the synthesized peptide.