

Product datasheet for **TA313024**

TAK1 (MAP3K7) Rabbit Polyclonal Antibody

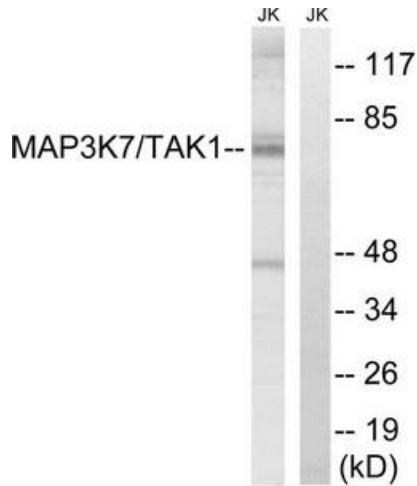
Product data:

Product Type:	Primary Antibodies
Applications:	IHC, WB
Recommended Dilution:	WB: 1:500~1:3000, IHC: 1:50~1:100, ELISA: 1:40000
Reactivity:	Human, Mouse, Rat
Host:	Rabbit
Isotype:	IgG
Clonality:	Polyclonal
Immunogen:	he antiserum was produced against synthesized non-phosphopeptide derived from human MAP3K7 around the phosphorylation site of threonine 187 (H-M-TP-N-N).
Formulation:	Phosphate buffered saline (without Mg ²⁺ and Ca ²⁺), pH 7.4, 150mM NaCl, 0.02% sodium azide and 50% glycerol.
Concentration:	lot specific
Purification:	The antibody was affinity-purified from rabbit antiserum by affinity-chromatography using epitope-specific immunogen.
Conjugation:	Unconjugated
Storage:	Store at -20°C as received.
Stability:	Stable for 12 months from date of receipt.
Gene Name:	mitogen-activated protein kinase kinase kinase 7
Database Link:	NP_003179 Entrez Gene 26409 MouseEntrez Gene 313121 RatEntrez Gene 6885 Human O43318
Synonyms:	MEKK7; TAK1; TGF1a
Note:	MAP3K7 (Ab-187) antibody detects endogenous levels of total MAP3K7 protein.
Protein Families:	Druggable Genome, Protein Kinase
Protein Pathways:	Adherens junction, MAPK signaling pathway, NOD-like receptor signaling pathway, RIG-I-like receptor signaling pathway, T cell receptor signaling pathway, Toll-like receptor signaling pathway, Wnt signaling pathway

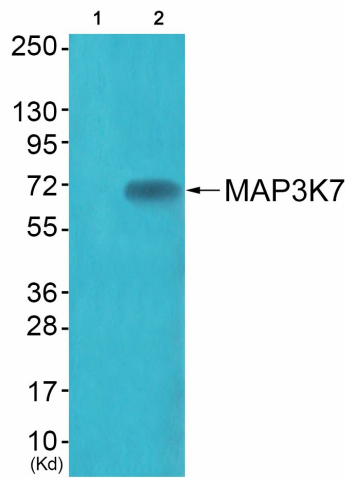


[View online »](#)

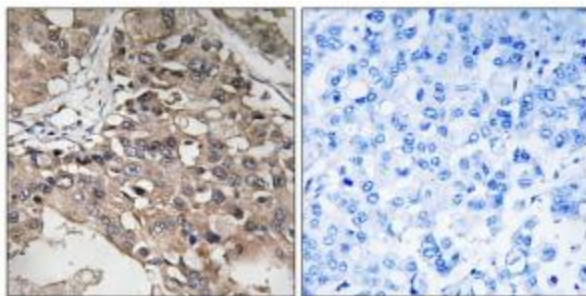
Product images:



Western blot analysis of extracts from Jurkat cells, treated with heat shock, using MAP3K7 (Ab-187) antibody. The lane on the right is treated with the synthesized peptide.



Western blot analysis of extracts from JK cells (Lane 2), using MAP3K7 (Ab-187) Antibody. The lane on the left is treated with synthesized peptide.



Immunohistochemistry analysis of paraffin-embedded human breast carcinoma tissue using MAP3K7 (Ab-187) antibody. The picture on the right is treated with the synthesized peptide.