

Product datasheet for **TA313021**

TIMP2 Rabbit Polyclonal Antibody

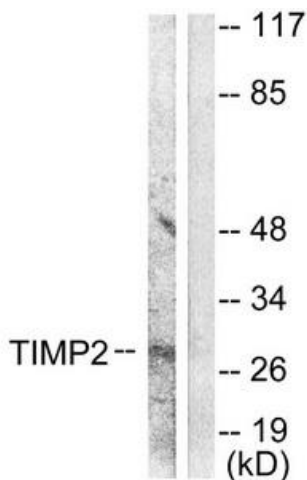
Product data:

Product Type:	Primary Antibodies
Applications:	IF, WB
Recommended Dilution:	WB: 1:500~1:3000, IF: 1:100~1:500, ELISA: 1:40000
Reactivity:	Human, Mouse, Rat
Host:	Rabbit
Isotype:	IgG
Clonality:	Polyclonal
Immunogen:	The antiserum was produced against synthesized peptide derived from human TIMP2.
Formulation:	Phosphate buffered saline (without Mg ²⁺ and Ca ²⁺), pH 7.4, 150mM NaCl, 0.02% sodium azide and 50% glycerol.
Concentration:	lot specific
Purification:	The antibody was affinity-purified from rabbit antiserum by affinity-chromatography using epitope-specific immunogen.
Conjugation:	Unconjugated
Storage:	Store at -20°C as received.
Stability:	Stable for 12 months from date of receipt.
Gene Name:	TIMP metalloproteinase inhibitor 2
Database Link:	NP_003246 Entrez Gene 21858 Mouse Entrez Gene 29543 Rat Entrez Gene 7077 Human P16035
Synonyms:	CSC-21K; DDC8
Note:	TIMP2 antibody detects endogenous levels of total TIMP2 protein.
Protein Families:	Druggable Genome, Secreted Protein

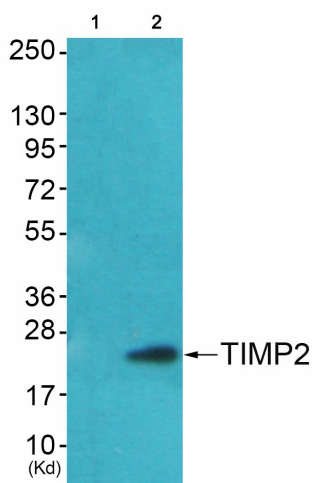


[View online »](#)

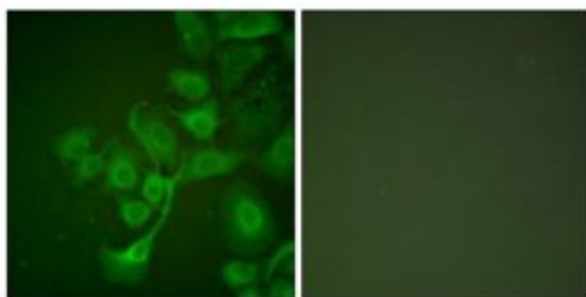
Product images:



Western blot analysis of extracts from A549 cells, using TIMP2 antibody (#TA313021).The lane on the right is treated with the synthesized peptide.



Western blot analysis of extracts from HepG2 cells (Lane 2), using TIMP2 Antibody. The lane on the left is treated with synthesized peptide.



Immunofluorescence analysis of A549 cells, using TIMP2 antibody (#TA313021).The picture on the right is treated with the synthesized peptide.