

## Product datasheet for **TA313018**

### Ube1L (UBA7) Rabbit Polyclonal Antibody

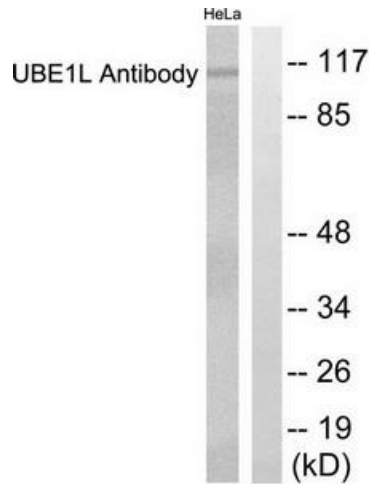
#### Product data:

Product Type:	Primary Antibodies
Applications:	IHC, WB
Recommended Dilution:	WB: 1:500~1:3000, IHC: 1:50~1:100, ELISA: 1:10000
Reactivity:	Human, Mouse
Host:	Rabbit
Isotype:	IgG
Clonality:	Polyclonal
Immunogen:	The antiserum was produced against synthesized peptide derived from C-terminal of human UBE1L.
Formulation:	Phosphate buffered saline (without Mg <sup>2+</sup> and Ca <sup>2+</sup> ), pH 7.4, 150mM NaCl, 0.02% sodium azide and 50% glycerol.
Concentration:	lot specific
Purification:	The antibody was affinity-purified from rabbit antiserum by affinity-chromatography using epitope-specific immunogen.
Conjugation:	Unconjugated
Storage:	Store at -20°C as received.
Stability:	Stable for 12 months from date of receipt.
Gene Name:	ubiquitin like modifier activating enzyme 7
Database Link:	<a href="#">NP_003326</a> <a href="#">Entrez Gene 74153 Mouse</a> <a href="#">Entrez Gene 7318 Human</a> <a href="#">P41226</a>
Synonyms:	D8; UBA1B; UBE1L; UBE2
Note:	UBE1L antibody detects endogenous levels of total UBE1L protein.
Protein Families:	Druggable Genome
Protein Pathways:	Parkinson's disease, Ubiquitin mediated proteolysis

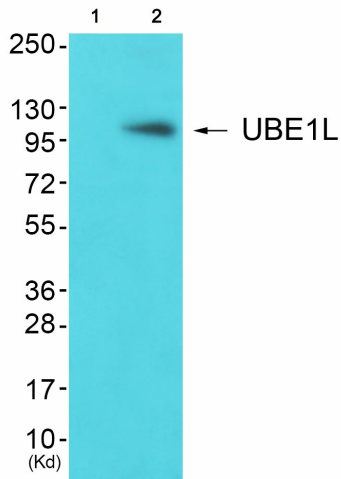


[View online »](#)

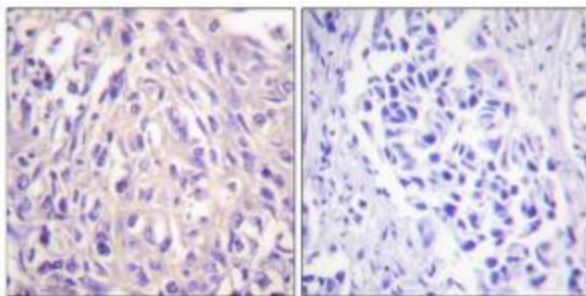
**Product images:**



Western blot analysis of extracts from HeLa cells, using UBE1L antibody. The lane on the right is treated with the synthesized peptide.



Western blot analysis of extracts from JK cells (Lane 2), using UBE1L Antibody. The lane on the left is treated with synthesized peptide.



Immunohistochemistry analysis of paraffin-embedded human breast carcinoma tissue using UBE1L antibody. The picture on the right is treated with the synthesized peptide.