

Product datasheet for **TA313017**

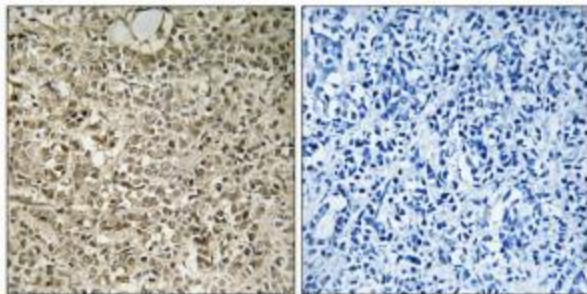
UBA52 Rabbit Polyclonal Antibody

Product data:

Product Type:	Primary Antibodies
Applications:	IHC
Recommended Dilution:	IHC: 1:50~1:100, ELISA: 1:40000
Reactivity:	Human, Mouse, Rat
Host:	Rabbit
Isotype:	IgG
Clonality:	Polyclonal
Immunogen:	The antiserum was produced against synthesized peptide derived from internal of human RPL40.
Formulation:	Phosphate buffered saline (without Mg ²⁺ and Ca ²⁺), pH 7.4, 150mM NaCl, 0.02% sodium azide and 50% glycerol.
Concentration:	lot specific
Purification:	The antibody was affinity-purified from rabbit antiserum by affinity-chromatography using epitope-specific immunogen.
Conjugation:	Unconjugated
Storage:	Store at -20°C as received.
Stability:	Stable for 12 months from date of receipt.
Gene Name:	ubiquitin A-52 residue ribosomal protein fusion product 1
Database Link:	NP_003324 Entrez Gene 22186 Mouse Entrez Gene 64156 Rat Entrez Gene 7311 Human P62987
Synonyms:	CEP52; HUBCEP52; L40; RPL40
Note:	RPL40 antibody detects endogenous levels of total RPL40 protein.
Protein Families:	Druggable Genome, Transcription Factors
Protein Pathways:	Ribosome



[View online »](#)

Product images:

Immunohistochemistry analysis of paraffin-embedded human breast carcinoma tissue using RPL40 antibody. The picture on the right is treated with the synthesized peptide.