

## Product datasheet for **TA313016**

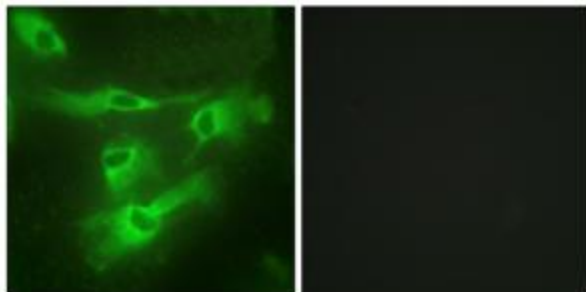
### TNFRSF4 Rabbit Polyclonal Antibody

#### Product data:

Product Type:	Primary Antibodies
Applications:	IF
Recommended Dilution:	IF: 1:100~1:500, ELISA: 1:10000
Reactivity:	Human, Mouse, Rat
Host:	Rabbit
Isotype:	IgG
Clonality:	Polyclonal
Immunogen:	The antiserum was produced against synthesized peptide derived from C-terminal of human TNFR4.
Formulation:	Phosphate buffered saline (without Mg <sup>2+</sup> and Ca <sup>2+</sup> ), pH 7.4, 150mM NaCl, 0.02% sodium azide and 50% glycerol.
Concentration:	lot specific
Purification:	The antibody was affinity-purified from rabbit antiserum by affinity-chromatography using epitope-specific immunogen.
Conjugation:	Unconjugated
Storage:	Store at -20°C as received.
Stability:	Stable for 12 months from date of receipt.
Gene Name:	tumor necrosis factor receptor superfamily member 4
Database Link:	<a href="#">NP_003318</a> <a href="#">Entrez Gene 22163 Mouse</a> <a href="#">Entrez Gene 25572 Rat</a> <a href="#">Entrez Gene 7293 Human</a> <a href="#">P43489</a>
Synonyms:	ACT35; CD134; IMD16; OX40; TXGP1L
Note:	TNFR4 antibody detects endogenous levels of total TNFR4 protein.
Protein Families:	Transmembrane
Protein Pathways:	Cytokine-cytokine receptor interaction



[View online »](#)

**Product images:**

Immunofluorescence analysis of HeLa cells, using TNFR4 antibody. The picture on the right is treated with the synthesized peptide.