

## Product datasheet for **TA313012**

### Cullin 1 (CUL1) Rabbit Polyclonal Antibody

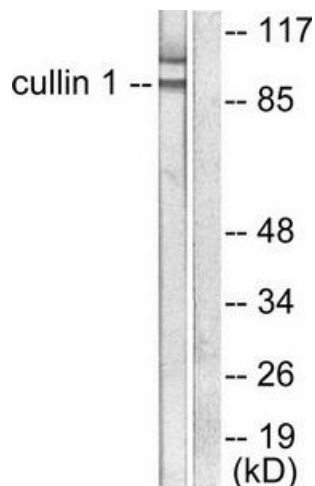
#### Product data:

Product Type:	Primary Antibodies
Applications:	IF, IHC, WB
Recommended Dilution:	WB: 1:500~1:3000, IHC: 1:50~1:100, IF: 1:100~1:500, ELISA: 1:20000
Reactivity:	Human, Mouse
Host:	Rabbit
Isotype:	IgG
Clonality:	Polyclonal
Immunogen:	The antiserum was produced against synthesized peptide derived from human Cullin 1.
Formulation:	Phosphate buffered saline (without Mg <sup>2+</sup> and Ca <sup>2+</sup> ), pH 7.4, 150mM NaCl, 0.02% sodium azide and 50% glycerol.
Concentration:	lot specific
Purification:	The antibody was affinity-purified from rabbit antiserum by affinity-chromatography using epitope-specific immunogen.
Conjugation:	Unconjugated
Storage:	Store at -20°C as received.
Stability:	Stable for 12 months from date of receipt.
Gene Name:	cullin 1
Database Link:	<a href="#">NP_003583</a> <a href="#">Entrez Gene 26965 Mouse</a> <a href="#">Entrez Gene 8454 Human</a> <a href="#">Q13616</a>
Synonyms:	MGC149834; MGC149835
Note:	Cullin 1 antibody detects endogenous levels of total Cullin 1 protein.
Protein Families:	Druggable Genome
Protein Pathways:	Cell cycle, Oocyte meiosis, TGF-beta signaling pathway, Ubiquitin mediated proteolysis, Wnt signaling pathway

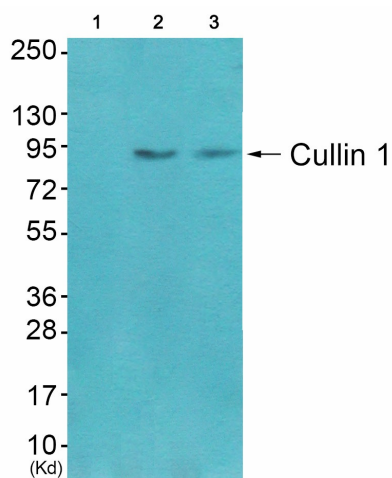


[View online »](#)

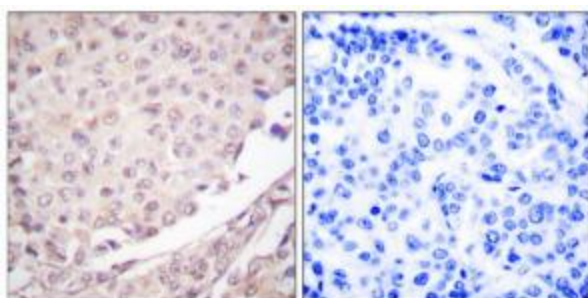
Product images:



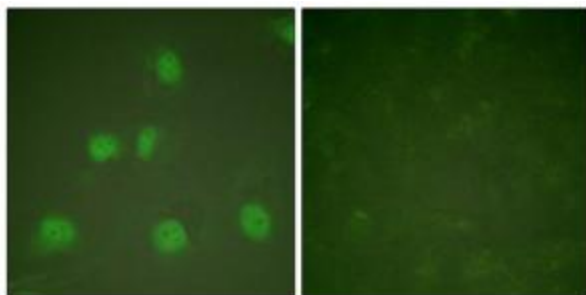
Western blot analysis of extracts from HeLa cells, using Cullin 1 antibody (#TA313012). The lane on the right is treated with the synthesized peptide.



Western blot analysis of extracts from CoLo cells (Lane 2) and 3T3 cells (Lane 3), using Cullin 1 Antibody. The lane on the left is treated with synthesized peptide.



Immunohistochemical analysis of paraffin-embedded human lung carcinoma tissue using Cullin 1 antibody (#TA313012). The picture on the right is treated with the synthesized peptide.



Immunofluorescence analysis of HeLa cells, treated with PMA (125ng/ml, 30mins), using Cullin 1 antibody (#TA313012). The picture on the right is treated with the synthesized peptide.