

Product datasheet for **TA313010**

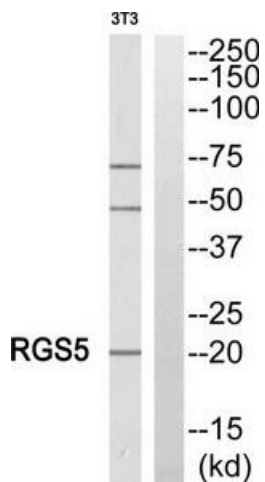
RGS5 Rabbit Polyclonal Antibody

Product data:

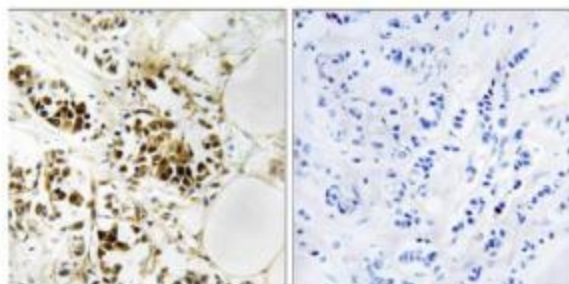
Product Type:	Primary Antibodies
Applications:	IHC, WB
Recommended Dilution:	WB: 1:500~1:3000, IHC: 1:50~1:100, ELISA: 1:40000
Reactivity:	Human, Mouse, Rat
Host:	Rabbit
Isotype:	IgG
Clonality:	Polyclonal
Immunogen:	The antiserum was produced against synthesized peptide derived from internal of human RGS5.
Formulation:	Phosphate buffered saline (without Mg ²⁺ and Ca ²⁺), pH 7.4, 150mM NaCl, 0.02% sodium azide and 50% glycerol.
Concentration:	lot specific
Purification:	The antibody was affinity-purified from rabbit antiserum by affinity-chromatography using epitope-specific immunogen.
Conjugation:	Unconjugated
Storage:	Store at -20°C as received.
Stability:	Stable for 12 months from date of receipt.
Gene Name:	regulator of G-protein signaling 5
Database Link:	NP_003608 Entrez Gene 19737 Mouse Entrez Gene 54294 Rat Entrez Gene 8490 Human O15539
Synonyms:	MST092; MST106; MST129; MSTP032; MSTP092; MSTP106; MSTP129
Note:	RGS5 antibody detects endogenous levels of total RGS5 protein.
Protein Families:	Druggable Genome



[View online »](#)

Product images:


Western blot analysis of extracts from NIH/3T3 cells, using RGS5 antibody. The lane on the right is treated with the synthesized peptide.



Peptide

-

+

Immunohistochemistry analysis of paraffin-embedded human breast carcinoma tissue, using RGS5 antibody. The picture on the right is treated with the synthesized peptide.