

Product datasheet for **TA313008**

COPS3 Rabbit Polyclonal Antibody

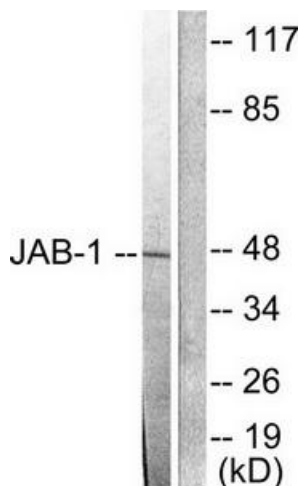
Product data:

Product Type:	Primary Antibodies
Applications:	IF, WB
Recommended Dilution:	WB: 1:500~1:3000, IF: 1:100~1:500, ELISA: 1:5000
Reactivity:	Human, Mouse, Rat
Host:	Rabbit
Isotype:	IgG
Clonality:	Polyclonal
Immunogen:	The antiserum was produced against synthesized peptide derived from human JAB1.
Formulation:	Phosphate buffered saline (without Mg ²⁺ and Ca ²⁺), pH 7.4, 150mM NaCl, 0.02% sodium azide and 50% glycerol.
Concentration:	lot specific
Purification:	The antibody was affinity-purified from rabbit antiserum by affinity-chromatography using epitope-specific immunogen.
Conjugation:	Unconjugated
Storage:	Store at -20°C as received.
Stability:	Stable for 12 months from date of receipt.
Gene Name:	COP9 signalosome subunit 3
Database Link:	NP_003644 Entrez Gene 26572 Mouse Entrez Gene 287367 Rat Entrez Gene 8533 Human Q9UNS2
Synonyms:	CSN3; SGN3
Note:	JAB1 antibody detects endogenous levels of total JAB1 protein.
Protein Families:	Stem cell - Pluripotency

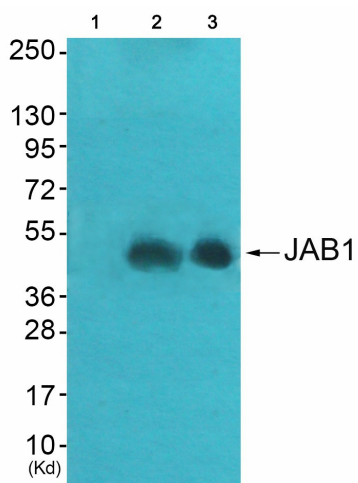


[View online »](#)

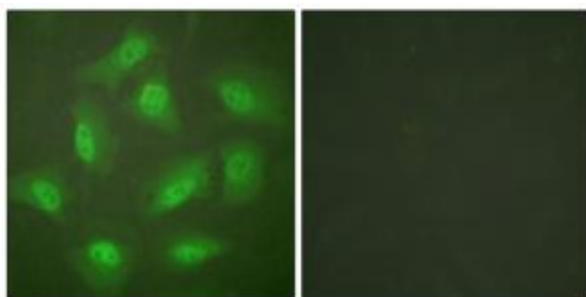
Product images:



Western blot analysis of extracts from LOVO cells, using JAB1 antibody (#TA313008). The lane on the right is treated with the synthesized peptide.



Western blot analysis of extracts from A549 cells (Lane 2) and HepG2 cells (Lane 3), using JAB1 Antibody. The lane on the left is treated with synthesized peptide.



Immunofluorescence analysis of HeLa cells, treated with Forskolin (40nM, 30mins), using JAB1 antibody (#TA313008). The picture on the right is treated with the synthesized peptide.