

## Product datasheet for **TA312997**

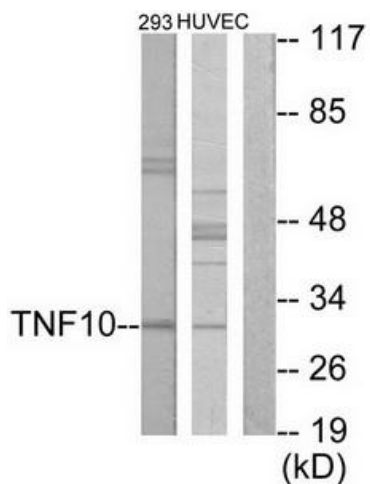
### TRAIL (TNFSF10) Rabbit Polyclonal Antibody

#### Product data:

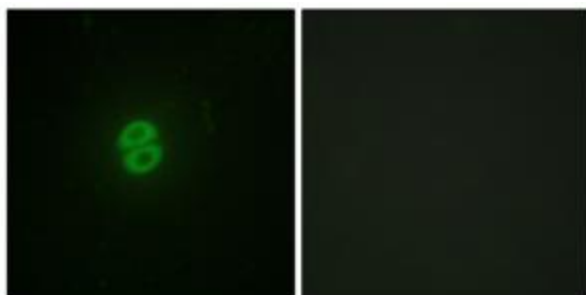
Product Type:	Primary Antibodies
Applications:	IF, WB
Recommended Dilution:	WB: 1:500~1:3000, IF: 1:100~1:500, ELISA: 1:20000
Reactivity:	Human
Host:	Rabbit
Isotype:	IgG
Clonality:	Polyclonal
Immunogen:	The antiserum was produced against synthesized peptide derived from internal of human CD253.
Formulation:	Phosphate buffered saline (without Mg <sup>2+</sup> and Ca <sup>2+</sup> ), pH 7.4, 150mM NaCl, 0.02% sodium azide and 50% glycerol.
Concentration:	lot specific
Purification:	The antibody was affinity-purified from rabbit antiserum by affinity-chromatography using epitope-specific immunogen.
Conjugation:	Unconjugated
Storage:	Store at -20°C as received.
Stability:	Stable for 12 months from date of receipt.
Gene Name:	tumor necrosis factor superfamily member 10
Database Link:	<a href="#">NP_003801</a> <a href="#">Entrez Gene 8743 Human</a> <a href="#">P50591</a>
Synonyms:	Apo-2L; APO2L; CD253; TL2; TRAIL
Note:	CD253 antibody detects endogenous levels of total CD253 protein.
Protein Families:	Druggable Genome, Transmembrane
Protein Pathways:	Apoptosis, Cytokine-cytokine receptor interaction, Natural killer cell mediated cytotoxicity



[View online »](#)

**Product images:**


Western blot analysis of extracts from 293 cells and HUVEC cells, using CD253 antibody. The lane on the right is treated with the synthesized peptide.



Immunofluorescence analysis of A549 cells, using CD253 antibody. The picture on the right is treated with the synthesized peptide.