

Product datasheet for **TA312995**

RIP2 (RIPK2) Rabbit Polyclonal Antibody

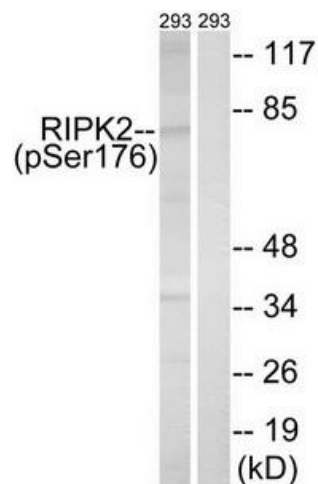
Product data:

Product Type:	Primary Antibodies
Applications:	IHC, WB
Recommended Dilution:	WB: 1:500~1:3000, IHC: 1:50~1:100, ELISA: 1:40000
Reactivity:	Human, Mouse
Modifications:	Phospho-specific
Host:	Rabbit
Isotype:	IgG
Clonality:	Polyclonal
Immunogen:	The antiserum was produced against synthesized phosphopeptide derived from human RIPK2 around the phosphorylation site of serine 176 (S-L-SP-Q-S).
Formulation:	Phosphate buffered saline (without Mg ²⁺ and Ca ²⁺), pH 7.4, 150mM NaCl, 0.02% sodium azide and 50% glycerol.
Concentration:	lot specific
Purification:	The antibody was affinity-purified from rabbit antiserum by affinity-chromatography using epitope-specific immunogen.
Conjugation:	Unconjugated
Storage:	Store at -20°C as received.
Stability:	Stable for 12 months from date of receipt.
Gene Name:	receptor interacting serine/threonine kinase 2
Database Link:	NP_003812 Entrez Gene 192656 Mouse Entrez Gene 8767 Human O43353
Synonyms:	CARD3; CARDIAK; CCK; GIG30; RICK; RIP2
Note:	RIPK2 (Phospho-Ser176) antibody detects endogenous levels of RIPK2 only when phosphorylated at serine 176.
Protein Families:	Druggable Genome, Protein Kinase
Protein Pathways:	Neurotrophin signaling pathway, NOD-like receptor signaling pathway

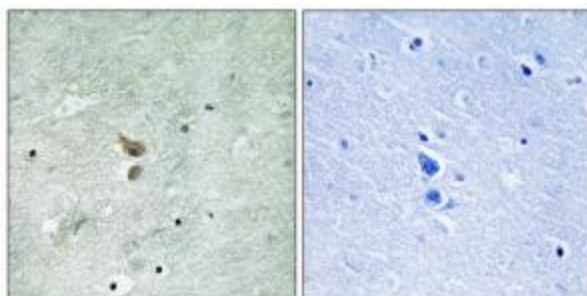


[View online »](#)

Product images:



Western blot analysis of extracts from 293 cells, treated with UV (15mins), using RIPK2 (Phospho-Ser176) antibody. The lane on the right is treated with the synthesized peptide.



Immunohistochemistry analysis of paraffin-embedded human brain tissue using RIPK2 (Phospho-Ser176) antibody. The picture on the right is treated with the synthesized peptide.