

Product datasheet for **TA312988**

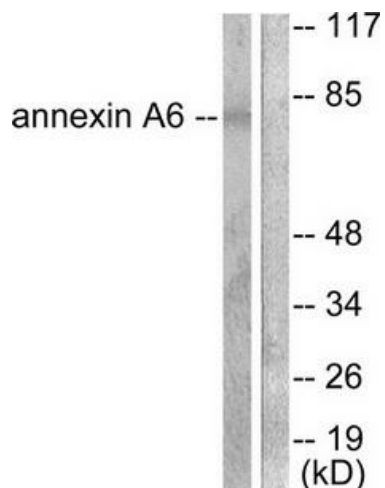
Annexin VI (ANXA6) Rabbit Polyclonal Antibody

Product data:

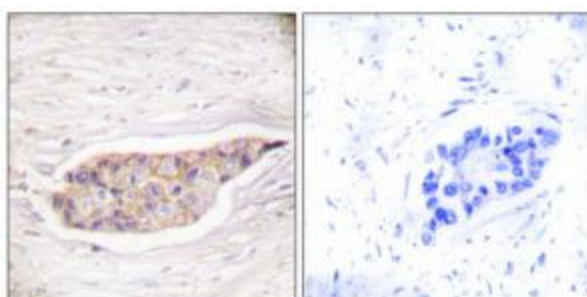
Product Type:	Primary Antibodies
Applications:	IF, IHC, WB
Recommended Dilution:	WB: 1:500~1:3000, IHC: 1:50~1:100, IF: 1:100~1:500, ELISA: 1:10000
Reactivity:	Human
Host:	Rabbit
Isotype:	IgG
Clonality:	Polyclonal
Immunogen:	The antiserum was produced against synthesized peptide derived from human Annexin A6.
Formulation:	Phosphate buffered saline (without Mg ²⁺ and Ca ²⁺), pH 7.4, 150mM NaCl, 0.02% sodium azide and 50% glycerol.
Concentration:	lot specific
Purification:	The antibody was affinity-purified from rabbit antiserum by affinity-chromatography using epitope-specific immunogen.
Conjugation:	Unconjugated
Storage:	Store at -20°C as received.
Stability:	Stable for 12 months from date of receipt.
Gene Name:	annexin A6
Database Link:	NP_004024 Entrez Gene 309 Human P08133
Synonyms:	annexin A6; annexin VI; annexin VI (p68); ANX6; calcium-binding protein p68; calelectrin; calphobindin II; CBP68
Note:	Annexin A6 antibody detects endogenous levels of total Annexin A6 protein.



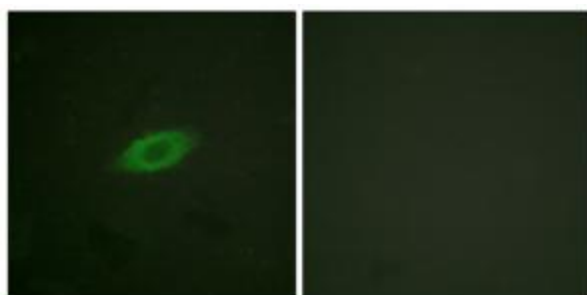
[View online »](#)

Product images:


Western blot analysis of extracts from 293 cells, using Annexin A6 antibody. The lane on the right is treated with the synthesized peptide.



Immunohistochemical analysis of paraffin-embedded human breast carcinoma tissue using Annexin A6 antibody. The picture on the right is treated with the synthesized peptide.



Immunofluorescence analysis of HeLa cells, treated with Forskolin (40nM, 30mins), using Annexin A6 antibody (#30006). The picture on the right is treated with the synthesized peptide.