

Product datasheet for **TA312978**

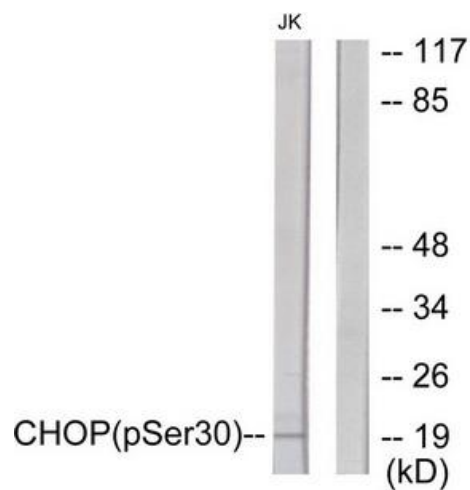
DDIT3 Rabbit Polyclonal Antibody

Product data:

Product Type:	Primary Antibodies
Applications:	WB
Recommended Dilution:	WB: 1:500~1:3000, IHC: 1:50~1:100, IF: 1:100~1:500, ELISA: 1:20000
Reactivity:	Human, Mouse
Modifications:	Phospho-specific
Host:	Rabbit
Isotype:	IgG
Clonality:	Polyclonal
Immunogen:	The antiserum was produced against synthesized phosphopeptide derived from human CHOP around the phosphorylation site of serine 30 (V-L-SP-S-D)
Formulation:	Phosphate buffered saline (without Mg ²⁺ and Ca ²⁺), pH 7.4, 150mM NaCl, 0.02% sodium azide and 50% glycerol.
Concentration:	lot specific
Purification:	The antibody was affinity-purified from rabbit antiserum by affinity-chromatography using epitope-specific immunogen.
Conjugation:	Unconjugated
Storage:	Store at -20°C as received.
Stability:	Stable for 12 months from date of receipt.
Gene Name:	DNA damage inducible transcript 3
Database Link:	NP_004074 Entrez Gene 13198 Mouse Entrez Gene 1649 Human P35638
Synonyms:	CEBPZ; CHOP; CHOP-10; CHOP10; GADD153
Note:	CHOP (Phospho-Ser30) antibody detects endogenous levels of CHOP only when phosphorylated at serine 30.
Protein Families:	Druggable Genome, Transcription Factors
Protein Pathways:	MAPK signaling pathway


[View online »](#)

Product images:



Western blot analysis of extracts from Jurkat cells, treated with PMA (125ug/ml, 30mins), using CHOP (Phospho-Ser30) antibody. The lane on the right is treated with the synthesized peptide.