

## Product datasheet for **TA312973**

### FLT3 Rabbit Polyclonal Antibody

#### Product data:

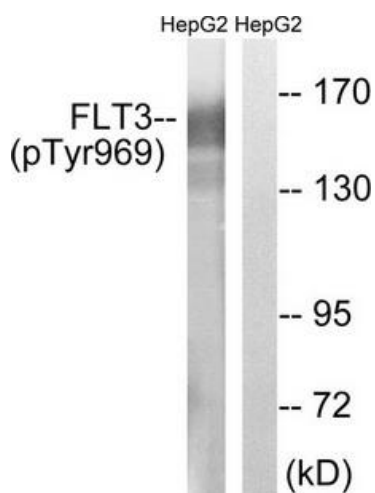
Product Type:	Primary Antibodies
Applications:	IHC, WB
Recommended Dilution:	WB: 1:500~1:3000, IHC: 1:50~1:100, ELISA: 1:5000
Reactivity:	Human
Modifications:	Phospho-specific
Host:	Rabbit
Isotype:	IgG
Clonality:	Polyclonal
Immunogen:	The antiserum was produced against synthesized phosphopeptide derived from human FLT3 around the phosphorylation site of tyrosine 696 (H-T-YP-Q-N).
Formulation:	Phosphate buffered saline (without Mg <sup>2+</sup> and Ca <sup>2+</sup> ), pH 7.4, 150mM NaCl, 0.02% sodium azide and 50% glycerol.
Concentration:	lot specific
Purification:	The antibody was affinity-purified from rabbit antiserum by affinity-chromatography using epitope-specific immunogen.
Conjugation:	Unconjugated
Storage:	Store at -20°C as received.
Stability:	Stable for 12 months from date of receipt.
Gene Name:	fms related tyrosine kinase 3
Database Link:	<a href="#">NP_004110</a> <a href="#">Entrez Gene 2322 Human P36888</a>
Synonyms:	CD135; FLK-2; FLK2; STK1
Note:	FLT3 (Phospho-Tyr969) antibody detects endogenous levels of FLT3 only when phosphorylated at tyrosine 696.
Protein Families:	Druggable Genome, ES Cell Differentiation/IPS, Protein Kinase, Transmembrane



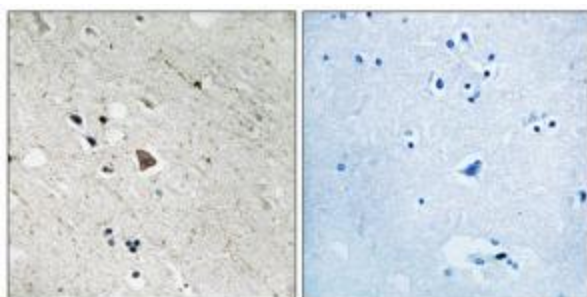
[View online »](#)

**Protein Pathways:** Acute myeloid leukemia, Cytokine-cytokine receptor interaction, Hematopoietic cell lineage, Pathways in cancer

**Product images:**



Western blot analysis of extracts from HepG2 cells, treated with Na<sub>3</sub>VO<sub>4</sub> (0.3mM, 40mins), using FLT3 (Phospho-Tyr969) antibody. The lane on the right is treated with the synthesized peptide.



Immunohistochemistry analysis of paraffin-embedded human brain tissue using FLT3 (Phospho-Tyr969) antibody. The picture on the right is treated with the synthesized peptide.