

Product datasheet for **TA312966**

Securin (PTTG1) Rabbit Polyclonal Antibody

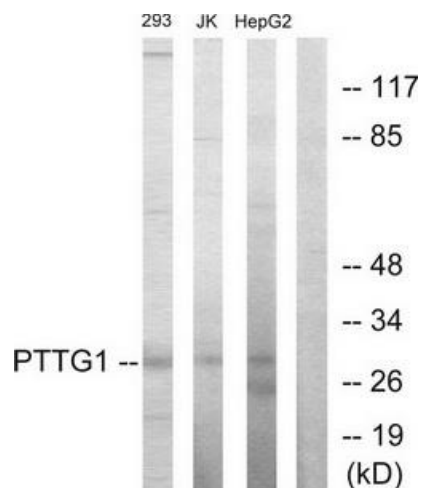
Product data:

Product Type:	Primary Antibodies
Applications:	IF, WB
Recommended Dilution:	WB: 1:500~1:3000, IF: 1:100~1:500, ELISA: 1:20000
Reactivity:	Human
Host:	Rabbit
Isotype:	IgG
Clonality:	Polyclonal
Immunogen:	The antiserum was produced against synthesized peptide derived from internal of human PTTG1.
Formulation:	Phosphate buffered saline (without Mg ²⁺ and Ca ²⁺), pH 7.4, 150mM NaCl, 0.02% sodium azide and 50% glycerol.
Concentration:	lot specific
Purification:	The antibody was affinity-purified from rabbit antiserum by affinity-chromatography using epitope-specific immunogen.
Conjugation:	Unconjugated
Storage:	Store at -20°C as received.
Stability:	Stable for 12 months from date of receipt.
Gene Name:	pituitary tumor-transforming 1
Database Link:	NP_004210 Entrez Gene 9232 Human O95997
Synonyms:	EAP1; HPTTG; PTTG; TUTR1
Note:	PTTG1 antibody detects endogenous levels of total PTTG1 protein.
Protein Families:	Druggable Genome, Transcription Factors
Protein Pathways:	Cell cycle, Oocyte meiosis

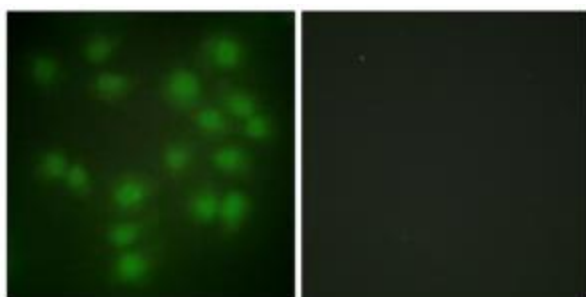


[View online »](#)

Product images:



Western blot analysis of extracts from 293 cells, Jurkat cells and HepG2 cells, using PTTG1 antibody. The lane on the right is treated with the synthesized peptide.



Immunofluorescence analysis of HUVEC cells, using PTTG1 antibody. The picture on the right is treated with the synthesized peptide.