

Product datasheet for **TA312962**

TRAF4 Rabbit Polyclonal Antibody

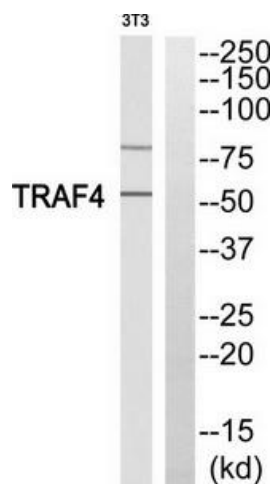
Product data:

Product Type:	Primary Antibodies
Applications:	WB
Recommended Dilution:	WB: 1:500~1:3000, ELISA: 1:10000
Reactivity:	Human, Mouse, Rat
Host:	Rabbit
Isotype:	IgG
Clonality:	Polyclonal
Immunogen:	The antiserum was produced against synthesized peptide derived from internal of human TRAF4.
Formulation:	Phosphate buffered saline (without Mg ²⁺ and Ca ²⁺), pH 7.4, 150mM NaCl, 0.02% sodium azide and 50% glycerol.
Concentration:	lot specific
Purification:	The antibody was affinity-purified from rabbit antiserum by affinity-chromatography using epitope-specific immunogen.
Conjugation:	Unconjugated
Storage:	Store at -20°C as received.
Stability:	Stable for 12 months from date of receipt.
Gene Name:	TNF receptor associated factor 4
Database Link:	NP_004286 Entrez Gene 22032 Mouse Entrez Gene 303285 Rat Entrez Gene 9618 Human Q9BUZ4
Synonyms:	CART1; MLN62; RNF83
Note:	TRAF4 antibody detects endogenous levels of total TRAF4 protein.
Protein Families:	Druggable Genome
Protein Pathways:	Pathways in cancer, Small cell lung cancer



[View online »](#)

Product images:



Western blot analysis of extracts from 3T3 cells, using TRAF4 antibody. The lane on the right is treated with the synthesized peptide.