

Product datasheet for **TA312959**

ALK Rabbit Polyclonal Antibody

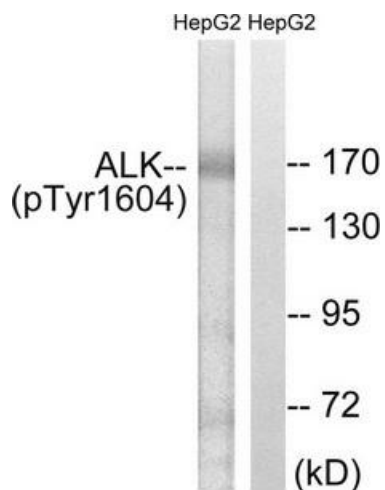
Product data:

Product Type:	Primary Antibodies
Applications:	IF, IHC, WB
Recommended Dilution:	WB: 1:500~1:3000, IHC: 1:50~1:100, IF: 1:100~1:500, ELISA: 1:20000
Reactivity:	Human
Modifications:	Phospho-specific
Host:	Rabbit
Isotype:	IgG
Clonality:	Polyclonal
Immunogen:	The antiserum was produced against synthesized phosphopeptide derived from human ALK around the phosphorylation site of tyrosine 1604 (G-H-YP-E-D).
Formulation:	Phosphate buffered saline (without Mg ²⁺ and Ca ²⁺), pH 7.4, 150mM NaCl, 0.02% sodium azide and 50% glycerol.
Concentration:	lot specific
Purification:	The antibody was affinity-purified from rabbit antiserum by affinity-chromatography using epitope-specific immunogen.
Conjugation:	Unconjugated
Storage:	Store at -20°C as received.
Stability:	Stable for 12 months from date of receipt.
Gene Name:	anaplastic lymphoma receptor tyrosine kinase
Database Link:	NP_004295 Entrez Gene 238 Human Q9UM73
Synonyms:	CD246; NBLST3
Note:	ALK (Phospho-Tyr1604) antibody detects endogenous levels of ALK only when phosphorylated at tyrosine 1604.
Protein Families:	Druggable Genome, Protein Kinase

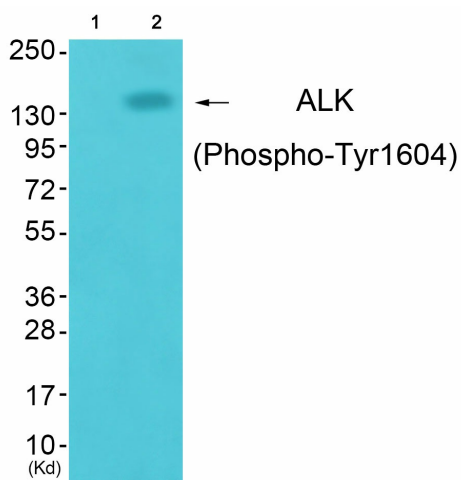


[View online »](#)

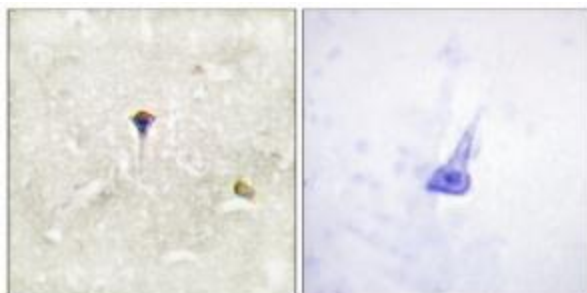
Product images:



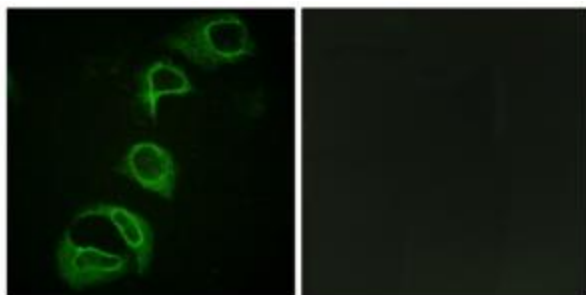
Western blot analysis of extracts from HepG2 cells, using ALK (Phospho-Tyr1604) antibody. The lane on the right is treated with the synthesized peptide.



Western blot analysis of extracts from cos-7 cells (Lane 2), using ALK (Phospho-Tyr1604) Antibody. The lane on the left is treated with synthesized peptide.



Immunohistochemistry analysis of paraffin-embedded human brain tissue, using ALK (Phospho-Tyr1604) antibody. The picture on the right is treated with the synthesized peptide.



Immunofluorescence analysis of HeLa cells, using ALK (Phospho-Tyr1604) antibody. The picture on the right is treated with the synthesized peptide.