

## Product datasheet for **TA312954**

### Precerebellin (CBLN1) Rabbit Polyclonal Antibody

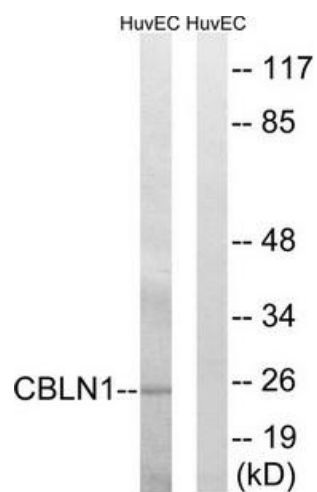
#### Product data:

Product Type:	Primary Antibodies
Applications:	WB
Recommended Dilution:	WB: 1:500~1:3000, ELISA: 1:10000
Reactivity:	Human
Host:	Rabbit
Isotype:	IgG
Clonality:	Polyclonal
Immunogen:	The antiserum was produced against synthesized peptide derived from internal of human CBLN1.
Formulation:	Phosphate buffered saline (without Mg <sup>2+</sup> and Ca <sup>2+</sup> ), pH 7.4, 150mM NaCl, 0.02% sodium azide and 50% glycerol.
Concentration:	lot specific
Purification:	The antibody was affinity-purified from rabbit antiserum by affinity-chromatography using epitope-specific immunogen.
Conjugation:	Unconjugated
Storage:	Store at -20°C as received.
Stability:	Stable for 12 months from date of receipt.
Gene Name:	cerebellin 1 precursor
Database Link:	<a href="#">NP_004343</a> <a href="#">Entrez Gene 869 Human</a> <a href="#">P23435</a>
Synonyms:	cerebellin 1; cerebellin 1 precursor
Note:	CBLN1 antibody detects endogenous levels of total CBLN1 protein.
Protein Families:	Secreted Protein



[View online »](#)

## Product images:



Western blot analysis of extracts from HUVEC cells, using CBLN1 antibody. The lane on the right is treated with the synthesized peptide.