

Product datasheet for **TA312953**

CEBP Alpha (CEBPA) Rabbit Polyclonal Antibody

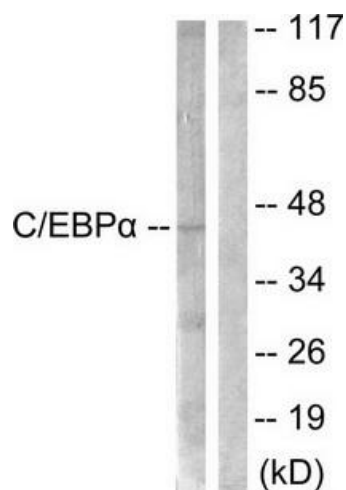
Product data:

Product Type:	Primary Antibodies
Applications:	IHC, WB
Recommended Dilution:	WB: 1:500~1:3000, IHC: 1:50~1:100, ELISA: 1:5000
Reactivity:	Human, Mouse, Rat
Host:	Rabbit
Isotype:	IgG
Clonality:	Polyclonal
Immunogen:	The antiserum was produced against synthesized non-phosphopeptide derived from human C/EBP-a around the phosphorylation site of serine 21 (L-Q-SP-P-P).
Formulation:	Phosphate buffered saline (without Mg ²⁺ and Ca ²⁺), pH 7.4, 150mM NaCl, 0.02% sodium azide and 50% glycerol.
Concentration:	lot specific
Purification:	The antibody was affinity-purified from rabbit antiserum by affinity-chromatography using epitope-specific immunogen.
Conjugation:	Unconjugated
Storage:	Store at -20°C as received.
Stability:	Stable for 12 months from date of receipt.
Gene Name:	CCAAT/enhancer binding protein alpha
Database Link:	NP_004355 Entrez Gene 12606 Mouse Entrez Gene 24252 Rat Entrez Gene 1050 Human P49715
Synonyms:	C; CEBP; EBP-alpha
Note:	C/EBP-. (Ab-21) antibody detects endogenous levels of total C/EBP-. protein.
Protein Families:	Druggable Genome, ES Cell Differentiation/IPS
Protein Pathways:	Acute myeloid leukemia, Pathways in cancer

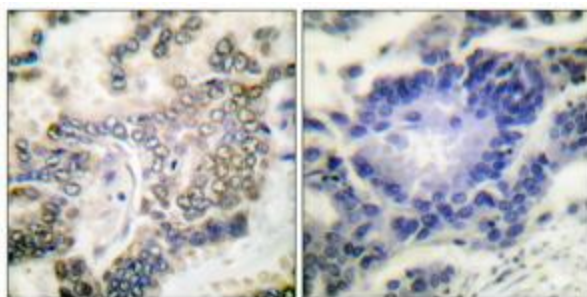


[View online »](#)

Product images:



Western blot analysis of extracts from 293 cells treated with Insulin (0.01U/ml, 15mins), using C/EBP-a (Ab-21) antibody. The lane on the right is treated with the synthesized peptide.



Immunohistochemical analysis of paraffin-embedded human lung carcinoma tissue, using C/EBP-a (Ab-21) antibody. The picture on the right is treated with the synthesized peptide.