

Product datasheet for **TA312952**

CEBP Alpha (CEBPA) Rabbit Polyclonal Antibody

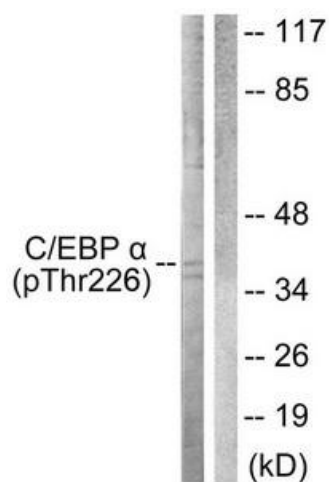
Product data:

Product Type:	Primary Antibodies
Applications:	WB
Recommended Dilution:	WB: 1:500~1:3000, ELISA: 1:10000
Reactivity:	Human, Mouse, Rat
Modifications:	Phospho-specific
Host:	Rabbit
Isotype:	IgG
Clonality:	Polyclonal
Immunogen:	The antiserum was produced against synthesized phosphopeptide derived from human C/EBP- α around the phosphorylation site of threonine 226 (H-P-TP-P-P).
Formulation:	Phosphate buffered saline (without Mg ²⁺ and Ca ²⁺), pH 7.4, 150mM NaCl, 0.02% sodium azide and 50% glycerol.
Concentration:	lot specific
Purification:	The antibody was affinity-purified from rabbit antiserum by affinity-chromatography using epitope-specific immunogen.
Conjugation:	Unconjugated
Storage:	Store at -20°C as received.
Stability:	Stable for 12 months from date of receipt.
Gene Name:	CCAAT/enhancer binding protein alpha
Database Link:	NP_004355 Entrez Gene 12606 Mouse Entrez Gene 24252 Rat Entrez Gene 1050 Human P49715
Synonyms:	C; CEBP; EBP-alpha
Note:	C/EBP-. (Phospho-Thr226) antibody detects endogenous levels of C/EBP-. only when phosphorylated at threonine 226.
Protein Families:	Druggable Genome, ES Cell Differentiation/IPS
Protein Pathways:	Acute myeloid leukemia, Pathways in cancer



[View online »](#)

Product images:



Western blot analysis of extracts from COS7 cells, treated with EGF (200ng/ml, 30mins), using C/EBP-a (Phospho-Thr226) antibody. The lane on the right is treated with the synthesized peptide.