

Product datasheet for **TA312948**

Cytochrome C Oxidase subunit VIc (COX6C) Rabbit Polyclonal Antibody

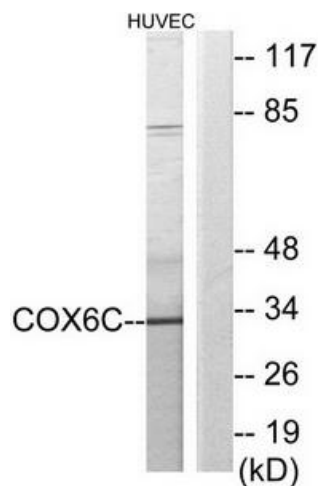
Product data:

Product Type:	Primary Antibodies
Applications:	IF, WB
Recommended Dilution:	WB: 1:500~1:3000, IF: 1:100~1:500, ELISA: 1:20000
Reactivity:	Human, Mouse, Rat
Host:	Rabbit
Isotype:	IgG
Clonality:	Polyclonal
Immunogen:	The antiserum was produced against synthesized peptide derived from internal of human COX6C.
Formulation:	Phosphate buffered saline (without Mg ²⁺ and Ca ²⁺), pH 7.4, 150mM NaCl, 0.02% sodium azide and 50% glycerol.
Concentration:	lot specific
Purification:	The antibody was affinity-purified from rabbit antiserum by affinity-chromatography using epitope-specific immunogen.
Conjugation:	Unconjugated
Storage:	Store at -20°C as received.
Stability:	Stable for 12 months from date of receipt.
Gene Name:	cytochrome c oxidase subunit 6C
Database Link:	NP_004365 Entrez Gene 12864 Mouse Entrez Gene 54322 Rat Entrez Gene 1345 Human P09669
Synonyms:	cytochrome c oxidase subunit VIc; cytochrome c oxidase subunit VIc preprotein
Note:	COX6C antibody detects endogenous levels of total COX6C protein.
Protein Families:	Transmembrane
Protein Pathways:	Alzheimer's disease, Cardiac muscle contraction, Huntington's disease, Metabolic pathways, Oxidative phosphorylation, Parkinson's disease

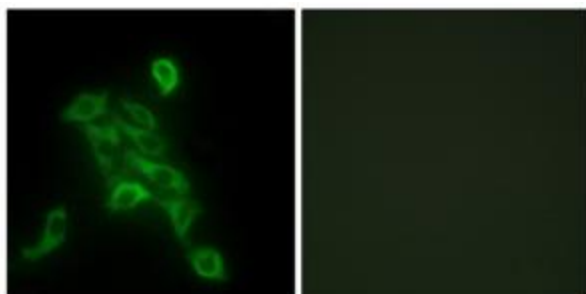


[View online »](#)

Product images:



Western blot analysis of extracts from HUVEC cells, using COX6C antibody. The lane on the right is treated with the synthesized peptide.



Immunofluorescence analysis of HepG2 cells, using COX6C antibody. The picture on the right is treated with the synthesized peptide.