

Product datasheet for TA312947

CNN2 Rabbit Polyclonal Antibody

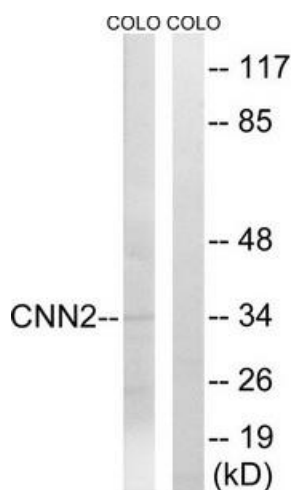
Product data:

Product Type:	Primary Antibodies
Applications:	IF, WB
Recommended Dilution:	WB: 1:500~1:3000, IF: 1:100~1:500, ELISA: 1:40000
Reactivity:	Human, Mouse
Host:	Rabbit
Isotype:	IgG
Clonality:	Polyclonal
Immunogen:	The antiserum was produced against synthesized peptide derived from internal of human CNN2.
Formulation:	Phosphate buffered saline (without Mg ²⁺ and Ca ²⁺), pH 7.4, 150mM NaCl, 0.02% sodium azide and 50% glycerol.
Concentration:	lot specific
Purification:	The antibody was affinity-purified from rabbit antiserum by affinity-chromatography using epitope-specific immunogen.
Conjugation:	Unconjugated
Storage:	Store at -20°C as received.
Stability:	Stable for 12 months from date of receipt.
Gene Name:	calponin 2
Database Link:	NP_004359 Entrez Gene 12798 Mouse Entrez Gene 1265 Human Q99439
Synonyms:	calponin 2; calponin H2; neutral calponin; smooth muscle
Note:	CNN2 antibody detects endogenous levels of total CNN2 protein.

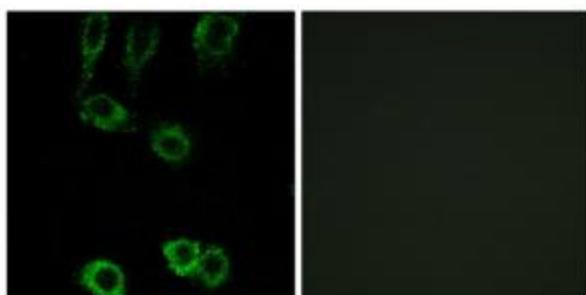


[View online »](#)

Product images:



Western blot analysis of extracts from HUVEC cells, using CNN2 antibody. The lane on the right is treated with the synthesized peptide.



Immunofluorescence analysis of A549 cells, using CNN2 antibody. The picture on the right is treated with the synthesized peptide.