

## Product datasheet for **TA312945**

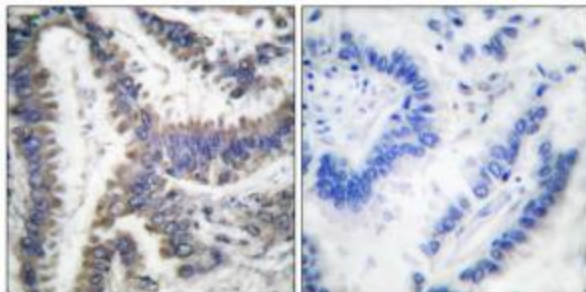
### ICAD (DFFA) Rabbit Polyclonal Antibody

#### Product data:

Product Type:	Primary Antibodies
Applications:	IHC
Recommended Dilution:	IHC: 1:50~100, ELISA: 1:5000
Reactivity:	Human
Host:	Rabbit
Isotype:	IgG
Clonality:	Polyclonal
Immunogen:	The antiserum was produced against synthesized peptide derived from human DFF45.
Formulation:	Phosphate buffered saline (without Mg <sup>2+</sup> and Ca <sup>2+</sup> ), pH 7.4, 150mM NaCl, 0.02% sodium azide and 50% glycerol.
Concentration:	lot specific
Purification:	The antibody was affinity-purified from rabbit antiserum by affinity-chromatography using epitope-specific immunogen.
Conjugation:	Unconjugated
Storage:	Store at -20°C as received.
Stability:	Stable for 12 months from date of receipt.
Gene Name:	DNA fragmentation factor subunit alpha
Database Link:	<a href="#">NP_004392</a> <a href="#">Entrez Gene 1676 Human</a> <a href="#">O00273</a>
Synonyms:	DFF-45; DFF1; ICAD
Note:	DFF45 (Cleaved-Asp224) antibody detects endogenous levels of fragment of activated DFF45 resulting from cleavage adjacent to Asp224.
Protein Pathways:	Apoptosis



[View online »](#)

**Product images:**

Immunohistochemical analysis of paraffin-embedded human lung carcinoma tissue, using DFF45 (Cleaved-Asp224) antibody. The picture on the right is treated with the synthesized peptide.