

## Product datasheet for **TA312933**

### MAPKAP Kinase 2 (MAPKAPK2) Rabbit Polyclonal Antibody

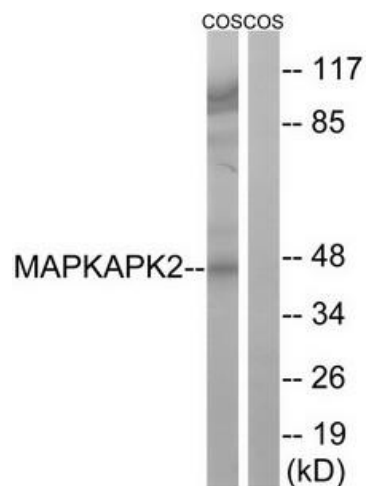
#### Product data:

Product Type:	Primary Antibodies
Applications:	IHC, WB
Recommended Dilution:	WB: 1:500~1:3000, IHC: 1:50~1:100, ELISA: 1:1000
Reactivity:	Human, Mouse, Rat
Host:	Rabbit
Isotype:	IgG
Clonality:	Polyclonal
Immunogen:	The antiserum was produced against synthesized non-phosphopeptide derived from human MAPKAPK2 around the phosphorylation site of serine 272 (A-I-SP-P-G).
Formulation:	Phosphate buffered saline (without Mg <sup>2+</sup> and Ca <sup>2+</sup> ), pH 7.4, 150mM NaCl, 0.02% sodium azide and 50% glycerol.
Concentration:	lot specific
Purification:	The antibody was affinity-purified from rabbit antiserum by affinity-chromatography using epitope-specific immunogen.
Conjugation:	Unconjugated
Storage:	Store at -20°C as received.
Stability:	Stable for 12 months from date of receipt.
Gene Name:	mitogen-activated protein kinase-activated protein kinase 2
Database Link:	<a href="#">NP_004750</a> <a href="#">Entrez Gene 17164 MouseEntrez Gene 289014 RatEntrez Gene 9261 Human P49137</a>
Synonyms:	MAPKAP-K2; MK-2; MK2
Note:	MAPKAPK2 (Ab-272) antibody detects endogenous levels of total MAPKAPK2 protein.
Protein Families:	Druggable Genome, Protein Kinase
Protein Pathways:	MAPK signaling pathway, Neurotrophin signaling pathway, VEGF signaling pathway

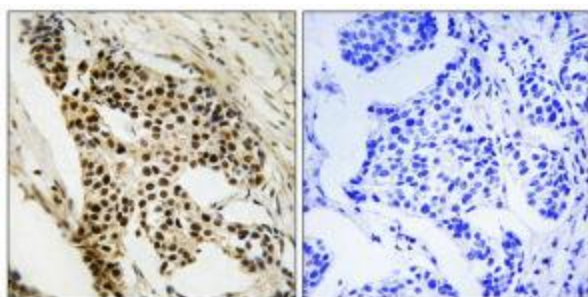


[View online »](#)

## Product images:



Western blot analysis of extracts from COS cells, using MAPKAPK2 (Ab-272) antibody. The lane on the right is treated with the synthesized peptide.



Immunohistochemistry analysis of paraffin-embedded human breast carcinoma tissue using MAPKAPK2 (Ab-272) antibody. The picture on the right is treated with the synthesized peptide.