

Product datasheet for **TA312931**

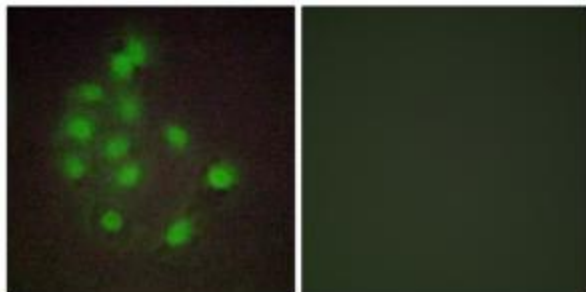
HAND1 Rabbit Polyclonal Antibody

Product data:

Product Type:	Primary Antibodies
Applications:	IF
Recommended Dilution:	IF: 1:100~1:500, ELISA: 1:10000
Reactivity:	Human, Mouse, Rat
Host:	Rabbit
Isotype:	IgG
Clonality:	Polyclonal
Immunogen:	The antiserum was produced against synthesized peptide derived from internal of human HAND1.
Formulation:	Phosphate buffered saline (without Mg ²⁺ and Ca ²⁺), pH 7.4, 150mM NaCl, 0.02% sodium azide and 50% glycerol.
Concentration:	lot specific
Purification:	The antibody was affinity-purified from rabbit antiserum by affinity-chromatography using epitope-specific immunogen.
Conjugation:	Unconjugated
Storage:	Store at -20°C as received.
Stability:	Stable for 12 months from date of receipt.
Gene Name:	heart and neural crest derivatives expressed 1
Database Link:	NP_004812 Entrez Gene 15110 Mouse Entrez Gene 59112 Rat Entrez Gene 9421 Human O96004
Synonyms:	bHLHa27; eHand; Hxt; Thing1
Note:	HAND1 antibody detects endogenous levels of total HAND1 protein.
Protein Families:	Druggable Genome, ES Cell Differentiation/IPS, Transcription Factors



[View online »](#)

Product images:

Immunofluorescence analysis of A549 cells, using HAND1 antibody. The picture on the right is treated with the synthesized peptide.