

Product datasheet for **TA312927**

MINPP1 Rabbit Polyclonal Antibody

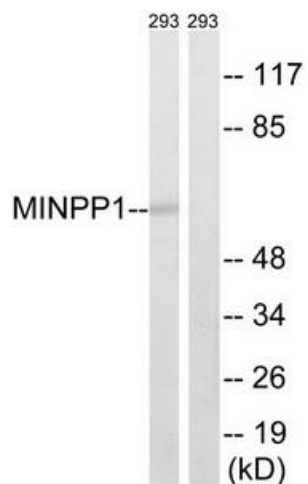
Product data:

Product Type:	Primary Antibodies
Applications:	WB
Recommended Dilution:	WB: 1:500~1:3000, ELISA: 1:10000
Reactivity:	Human, Mouse, Rat
Host:	Rabbit
Isotype:	IgG
Clonality:	Polyclonal
Immunogen:	The antiserum was produced against synthesized peptide derived from internal of human MINPP1.
Formulation:	Phosphate buffered saline (without Mg ²⁺ and Ca ²⁺), pH 7.4, 150mM NaCl, 0.02% sodium azide and 50% glycerol.
Concentration:	lot specific
Purification:	The antibody was affinity-purified from rabbit antiserum by affinity-chromatography using epitope-specific immunogen.
Conjugation:	Unconjugated
Storage:	Store at -20°C as received.
Stability:	Stable for 12 months from date of receipt.
Gene Name:	multiple inositol-polyphosphate phosphatase 1
Database Link:	NP_004888 Entrez Gene 17330 Mouse Entrez Gene 29688 Rat Entrez Gene 9562 Human Q9UNW1
Synonyms:	HIPER1; MINPP2; MIPP
Note:	MINPP1 antibody detects endogenous levels of total MINPP1 protein.
Protein Families:	Druggable Genome
Protein Pathways:	Inositol phosphate metabolism



[View online »](#)

Product images:



Western blot analysis of extracts from 293 cells, using MINPP1 antibody. The lane on the right is treated with the synthesized peptide.