

Product datasheet for **TA312926**

p15 INK4b (CDKN2B) Rabbit Polyclonal Antibody

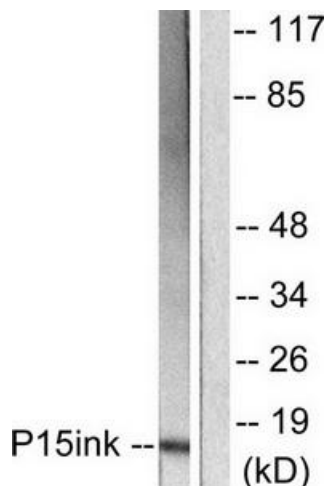
Product data:

Product Type:	Primary Antibodies
Applications:	IF, IHC, WB
Recommended Dilution:	WB: 1:500~1:3000, IHC: 1:50~1:100, IF: 1:100~1:500, ELISA: 1:5000
Reactivity:	Human, Mouse, Rat
Host:	Rabbit
Isotype:	IgG
Clonality:	Polyclonal
Immunogen:	The antiserum was produced against synthesized peptide derived from human p15 INK antibody.
Formulation:	Phosphate buffered saline (without Mg ²⁺ and Ca ²⁺), pH 7.4, 150mM NaCl, 0.02% sodium azide and 50% glycerol.
Concentration:	lot specific
Purification:	The antibody was affinity-purified from rabbit antiserum by affinity-chromatography using epitope-specific immunogen.
Conjugation:	Unconjugated
Storage:	Store at -20°C as received.
Stability:	Stable for 12 months from date of receipt.
Gene Name:	cyclin-dependent kinase inhibitor 2B
Database Link:	NP_004927 Entrez Gene 12579 MouseEntrez Gene 25164 RatEntrez Gene 1030 Human P42772
Synonyms:	CDK4I; INK4B; MTS2; P15; p15INK4b; TP15
Note:	p15 INK antibody detects endogenous levels of total p15 INK protein.
Protein Families:	Druggable Genome
Protein Pathways:	Cell cycle, Pathways in cancer, Small cell lung cancer, TGF-beta signaling pathway

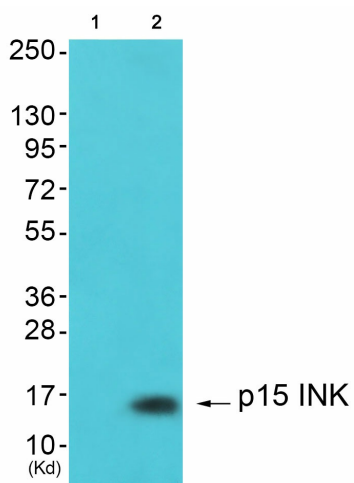


[View online »](#)

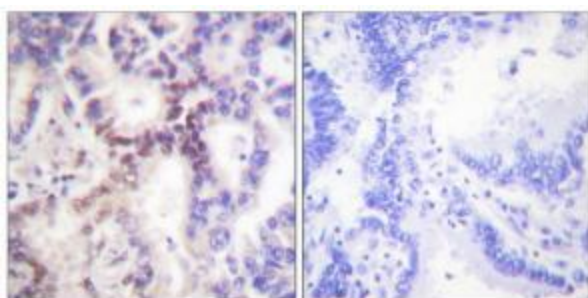
Product images:



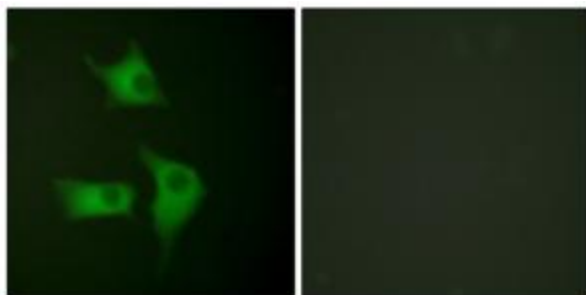
Western blot analysis of extracts from HeLa cells, using p15 INK antibody (#TA312926). The lane on the right is treated with the synthesized peptide.



Western blot analysis of extracts from 293 cells (Lane 2), using p15 INK Antibody. The lane on the left is treated with synthesized peptide.



Immunohistochemical analysis of paraffin-embedded human lung carcinoma tissue using p15 INK antibody (#TA312926). The picture on the right is treated with the synthesized peptide.



Immunofluorescence analysis of HeLa cells, using p15 INK antibody (#TA312926). The picture on the right is treated with the synthesized peptide.