

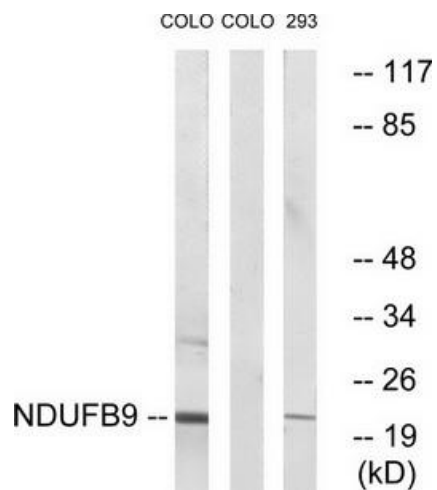
Product datasheet for TA312920

NDUFB9 Rabbit Polyclonal Antibody

Product data:

Product Type:	Primary Antibodies
Applications:	WB
Recommended Dilution:	WB: 1:500~1:3000, ELISA: 1:10000
Reactivity:	Human, Mouse, Rat
Host:	Rabbit
Isotype:	IgG
Clonality:	Polyclonal
Immunogen:	The antiserum was produced against synthesized peptide derived from internal of human NDUFB9.
Formulation:	Phosphate buffered saline (without Mg ²⁺ and Ca ²⁺), pH 7.4, 150mM NaCl, 0.02% sodium azide and 50% glycerol.
Concentration:	lot specific
Purification:	The antibody was affinity-purified from rabbit antiserum by affinity-chromatography using epitope-specific immunogen.
Conjugation:	Unconjugated
Storage:	Store at -20°C as received.
Stability:	Stable for 12 months from date of receipt.
Gene Name:	NADH:ubiquinone oxidoreductase subunit B9
Database Link:	NP_004996 Entrez Gene 66218 MouseEntrez Gene 299954 RatEntrez Gene 4715 Human Q9Y6M9
Synonyms:	B22; CI-B22; LYRM3; UQOR22
Note:	NDUFB9 antibody detects endogenous levels of total NDUFB9 protein.
Protein Pathways:	Alzheimer's disease, Huntington's disease, Metabolic pathways, Oxidative phosphorylation, Parkinson's disease


[View online »](#)

Product images:


Western blot analysis of extracts from COLO cells and 293 cells, using NDUFB9 antibody. The lane on the right is treated with the synthesized peptide.