

Product datasheet for **TA312919**

ABCD4 Rabbit Polyclonal Antibody

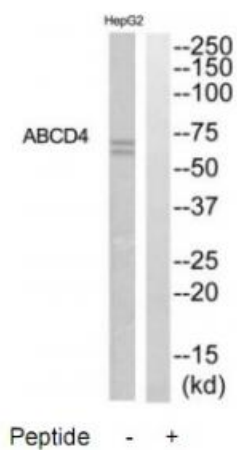
Product data:

Product Type:	Primary Antibodies
Applications:	WB
Recommended Dilution:	WB: 1:500~1:3000, IHC: 1:50~1:100, ELISA: 1:10000
Reactivity:	Mouse, Human
Host:	Rabbit
Isotype:	IgG
Clonality:	Polyclonal
Immunogen:	The antiserum was produced against synthesized peptide derived from internal of human ABCD4.
Formulation:	Phosphate buffered saline (without Mg ²⁺ and Ca ²⁺), pH 7.4, 150mM NaCl, 0.02% sodium azide and 50% glycerol.
Concentration:	lot specific
Purification:	The antibody was affinity-purified from rabbit antiserum by affinity-chromatography using epitope-specific immunogen.
Conjugation:	Unconjugated
Storage:	Store at -20°C as received.
Stability:	Stable for 12 months from date of receipt.
Gene Name:	ATP binding cassette subfamily D member 4
Database Link:	NP_005041 Entrez Gene 19300 Mouse Entrez Gene 5826 Human O14678
Synonyms:	ABC41; EST352188; MAHCJ; P70R; P79R; PMP69; PXMP1L
Note:	ABCD4 antibody detects endogenous levels of total ABCD4 protein.
Protein Families:	Druggable Genome, Transmembrane
Protein Pathways:	ABC transporters



[View online »](#)

Product images:



Western blot analysis of extracts from HepG2 cells, using ABCD4 antibody. The lane on the right is treated with the synthesized peptide.