

Product datasheet for **TA312917**

TRIM25 Rabbit Polyclonal Antibody

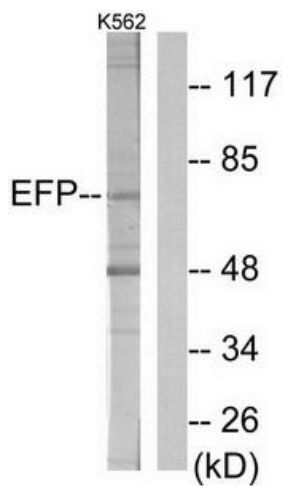
Product data:

Product Type:	Primary Antibodies
Applications:	WB
Recommended Dilution:	WB: 1:500~1:3000, ELISA: 1:5000
Reactivity:	Human
Host:	Rabbit
Isotype:	IgG
Clonality:	Polyclonal
Immunogen:	The antiserum was produced against synthesized peptide derived from internal of human ZNF147.
Formulation:	Phosphate buffered saline (without Mg ²⁺ and Ca ²⁺), pH 7.4, 150mM NaCl, 0.02% sodium azide and 50% glycerol.
Concentration:	lot specific
Purification:	The antibody was affinity-purified from rabbit antiserum by affinity-chromatography using epitope-specific immunogen.
Conjugation:	Unconjugated
Storage:	Store at -20°C as received.
Stability:	Stable for 12 months from date of receipt.
Gene Name:	tripartite motif containing 25
Database Link:	NP_005073 Entrez Gene 7706 Human Q14258
Synonyms:	EFP; RNF147; Z147; ZNF147
Note:	ZNF147 antibody detects endogenous levels of total ZNF147 protein.
Protein Families:	Druggable Genome, Transcription Factors
Protein Pathways:	RIG-I-like receptor signaling pathway



[View online »](#)

Product images:



Western blot analysis of extracts from K562 cells, using ZNF147 antibody. The lane on the right is treated with the synthesized peptide.