

Product datasheet for **TA312916**

SFRS17A (AKAP17A) Rabbit Polyclonal Antibody

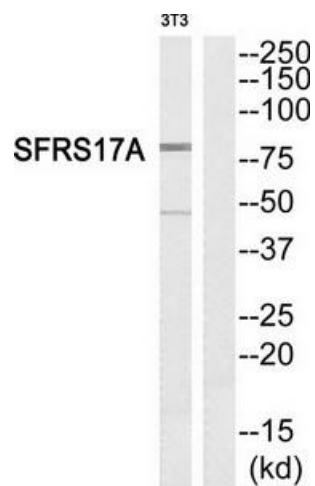
Product data:

Product Type:	Primary Antibodies
Applications:	WB
Recommended Dilution:	WB: 1:500~1:3000, ELISA: 1:40000
Reactivity:	Human, Mouse, Rat
Host:	Rabbit
Isotype:	IgG
Clonality:	Polyclonal
Immunogen:	The antiserum was produced against synthesized peptide derived from C-terminal of human SFRS17A.
Formulation:	Phosphate buffered saline (without Mg ²⁺ and Ca ²⁺), pH 7.4, 150mM NaCl, 0.02% sodium azide and 50% glycerol.
Concentration:	lot specific
Purification:	The antibody was affinity-purified from rabbit antiserum by affinity-chromatography using epitope-specific immunogen.
Conjugation:	Unconjugated
Storage:	Store at -20°C as received.
Stability:	Stable for 12 months from date of receipt.
Gene Name:	A-kinase anchoring protein 17A
Database Link:	NP_005079 Entrez Gene 288526 Rat Entrez Gene 8227 Human Q02040
Synonyms:	721P; AKAP-17A; CCDC133; CXYorf3; DXYS155E; PRKA17A; SFRS17A; XE7; XE7Y
Note:	SFRS17A antibody detects endogenous levels of total SFRS17A protein.
Protein Families:	Druggable Genome, Transcription Factors



[View online »](#)

Product images:



Western blot analysis of extracts from NIH-3T3 cells, using SFRS17A antibody. The lane on the right is treated with the synthesized peptide.