

Product datasheet for **TA312915**

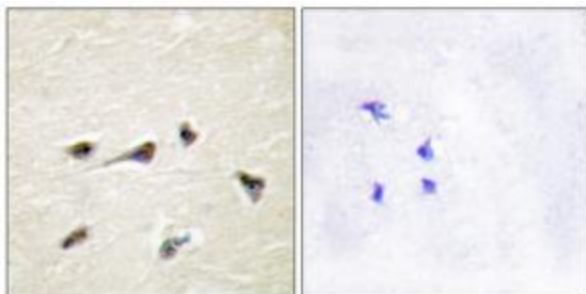
AKAP12 Rabbit Polyclonal Antibody

Product data:

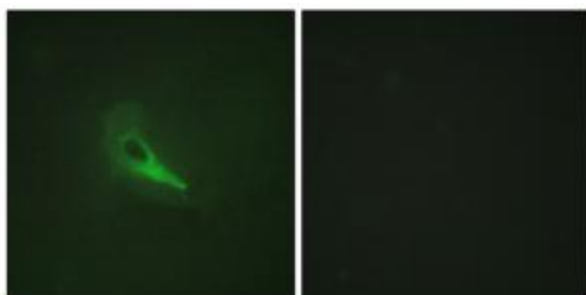
Product Type:	Primary Antibodies
Applications:	IF, IHC
Recommended Dilution:	IHC: 1:50~1:100, IF: 1:100~1:500, ELISA: 1:20000
Reactivity:	Human
Host:	Rabbit
Isotype:	IgG
Clonality:	Polyclonal
Immunogen:	The antiserum was produced against synthesized peptide derived from internal of human AKAP12.
Formulation:	Phosphate buffered saline (without Mg ²⁺ and Ca ²⁺), pH 7.4, 150mM NaCl, 0.02% sodium azide and 50% glycerol.
Concentration:	lot specific
Purification:	The antibody was affinity-purified from rabbit antiserum by affinity-chromatography using epitope-specific immunogen.
Conjugation:	Unconjugated
Storage:	Store at -20°C as received.
Stability:	Stable for 12 months from date of receipt.
Gene Name:	A-kinase anchoring protein 12
Database Link:	NP_005091 Entrez Gene 9590 Human Q02952
Synonyms:	AKAP250; SSeCKS
Note:	AKAP12 antibody detects endogenous levels of total AKAP12 protein.
Protein Families:	Druggable Genome



[View online »](#)

Product images:

Immunohistochemistry analysis of paraffin-embedded human brain tissue, using AKAP12 antibody. The picture on the right is treated with the synthesized peptide.



Immunofluorescence analysis of HeLa cells, using AKAP12 antibody. The picture on the right is treated with the synthesized peptide.