

Product datasheet for **TA312914**

GRK3 Rabbit Polyclonal Antibody

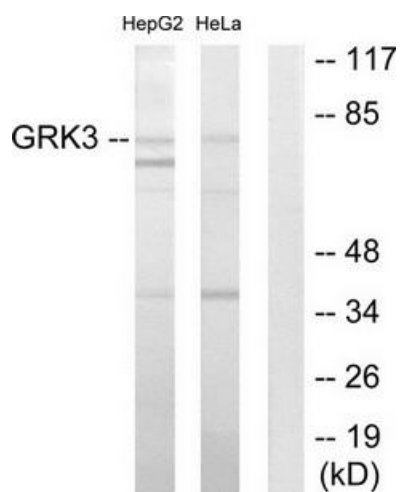
Product data:

Product Type:	Primary Antibodies
Applications:	WB
Recommended Dilution:	WB: 1:500~1:3000, ELISA: 1:20000
Reactivity:	Human, Mouse, Rat
Host:	Rabbit
Isotype:	IgG
Clonality:	Polyclonal
Immunogen:	he antiserum was produced against synthesized peptide derived from internal of human GRK3.
Formulation:	Phosphate buffered saline (without Mg ²⁺ and Ca ²⁺), pH 7.4, 150mM NaCl, 0.02% sodium azide and 50% glycerol.
Concentration:	lot specific
Purification:	The antibody was affinity-purified from rabbit antiserum by affinity-chromatography using epitope-specific immunogen.
Conjugation:	Unconjugated
Storage:	Store at -20°C as received.
Stability:	Stable for 12 months from date of receipt.
Gene Name:	G protein-coupled receptor kinase 3
Database Link:	NP_005151 Entrez Gene 25372 Rat Entrez Gene 320129 Mouse Entrez Gene 157 Human P35626
Synonyms:	ADRBK2; BARK2
Note:	GRK3 antibody detects endogenous levels of total GRK3 protein.
Protein Families:	Druggable Genome, Protein Kinase
Protein Pathways:	Chemokine signaling pathway, Endocytosis, Olfactory transduction



[View online »](#)

Product images:



Western blot analysis of extracts from HepG2 cells and HeLa cells, using GRK3 antibody. The lane on the right is treated with the synthesized peptide.