

Product datasheet for **TA312911**

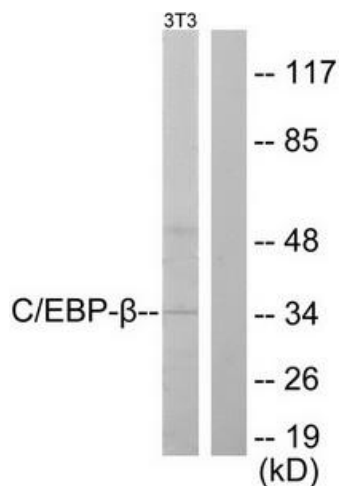
CEBP Beta (CEBPB) Rabbit Polyclonal Antibody

Product data:

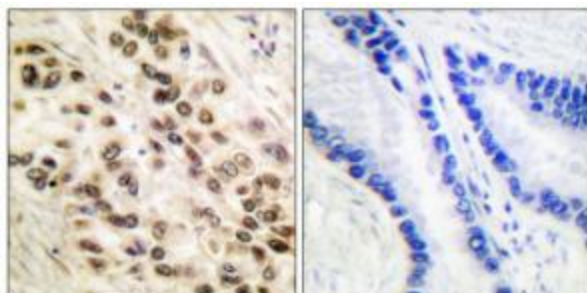
Product Type:	Primary Antibodies
Applications:	IHC, WB
Recommended Dilution:	WB: 1:500~1:3000, IHC: 1:50~1:100, ELISA: 1:10000
Reactivity:	Human, Mouse, Rat
Host:	Rabbit
Isotype:	IgG
Clonality:	Polyclonal
Immunogen:	The antiserum was produced against synthesized non-phosphopeptide derived from human C/EBP- β around the phosphorylation site of threonine 235 (P-G-T-P-S).
Formulation:	Phosphate buffered saline (without Mg ²⁺ and Ca ²⁺), pH 7.4, 150mM NaCl, 0.02% sodium azide and 50% glycerol.
Concentration:	lot specific
Purification:	The antibody was affinity-purified from rabbit antiserum by affinity-chromatography using epitope-specific immunogen.
Conjugation:	Unconjugated
Storage:	Store at -20°C as received.
Stability:	Stable for 12 months from date of receipt.
Gene Name:	CCAAT/enhancer binding protein beta
Database Link:	NP_005185 Entrez Gene 12608 Mouse Entrez Gene 24253 Rat Entrez Gene 1051 Human P17676
Synonyms:	C; EBP-beta; IL6DBP; NF-IL6; TCF5
Note:	C/EBP-. (Ab-235/188) antibody detects endogenous levels of total C/EBP-. protein.
Protein Families:	Druggable Genome, ES Cell Differentiation/IPS, Transcription Factors



[View online »](#)

Product images:


Western blot analysis of extracts from NIH/3T3 cells, using C/EBP- β (Ab-235/188) antibody (#TA312911). The lane on the right is treated with the synthesized peptide.



Immunohistochemical analysis of paraffin-embedded human lung carcinoma tissue using C/EBP- β (Ab-235/188) antibody (#TA312911). The picture on the right is treated with the synthesized peptide.