

## Product datasheet for **TA312904**

### Eph receptor A3 (EPHA3) Rabbit Polyclonal Antibody

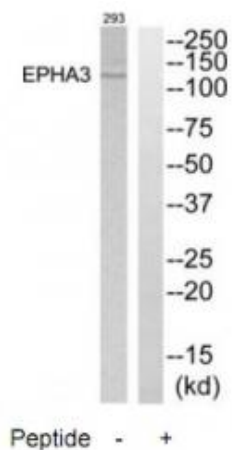
#### Product data:

Product Type:	Primary Antibodies
Applications:	WB
Recommended Dilution:	WB: 1:500~1:3000, IHC: 1:50~1:100, ELISA: 1:40000
Reactivity:	Mouse, Human, Rat
Host:	Rabbit
Isotype:	IgG
Clonality:	Polyclonal
Immunogen:	The antiserum was produced against synthesized peptide derived from internal of human EPHA3.
Formulation:	Phosphate buffered saline (without Mg <sup>2+</sup> and Ca <sup>2+</sup> ), pH 7.4, 150mM NaCl, 0.02% sodium azide and 50% glycerol.
Concentration:	lot specific
Purification:	The antibody was affinity-purified from rabbit antiserum by affinity-chromatography using epitope-specific immunogen.
Conjugation:	Unconjugated
Storage:	Store at -20°C as received.
Stability:	Stable for 12 months from date of receipt.
Gene Name:	EPH receptor A3
Database Link:	<a href="#">NP_005224</a> <a href="#">Entrez Gene 13837 Mouse</a> <a href="#">Entrez Gene 29210 Rat</a> <a href="#">Entrez Gene 2042 Human</a> <a href="#">P29320</a>
Synonyms:	EK4; ETK; ETK1; HEK; HEK4; TYRO4
Note:	EPHA3 antibody detects endogenous levels of total EPHA3 protein.
Protein Families:	Druggable Genome, Protein Kinase, Secreted Protein, Transmembrane
Protein Pathways:	Axon guidance



[View online »](#)

## Product images:



Western blot analysis of extracts from 293 cells, using EPHA3 antibody. The lane on the right is treated with the synthesized peptide.