

## Product datasheet for **TA312903**

### **HINT1 Rabbit Polyclonal Antibody**

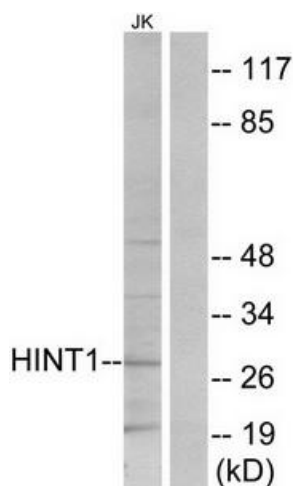
#### **Product data:**

<b>Product Type:</b>	Primary Antibodies
<b>Applications:</b>	IF, WB
<b>Recommended Dilution:</b>	WB: 1:500~1:3000, IF: 1:100~1:500, ELISA: 1:20000
<b>Reactivity:</b>	Human, Mouse, Rat
<b>Host:</b>	Rabbit
<b>Isotype:</b>	IgG
<b>Clonality:</b>	Polyclonal
<b>Immunogen:</b>	The antiserum was produced against synthesized peptide derived from internal of human HINT1.
<b>Formulation:</b>	Phosphate buffered saline (without Mg <sup>2+</sup> and Ca <sup>2+</sup> ), pH 7.4, 150mM NaCl, 0.02% sodium azide and 50% glycerol.
<b>Concentration:</b>	lot specific
<b>Purification:</b>	The antibody was affinity-purified from rabbit antiserum by affinity-chromatography using epitope-specific immunogen.
<b>Conjugation:</b>	Unconjugated
<b>Storage:</b>	Store at -20°C as received.
<b>Stability:</b>	Stable for 12 months from date of receipt.
<b>Gene Name:</b>	histidine triad nucleotide binding protein 1
<b>Database Link:</b>	<a href="#">NP_005331</a> <a href="#">Entrez Gene 15254 MouseEntrez Gene 690660 RatEntrez Gene 3094 Human P49773</a>
<b>Synonyms:</b>	HINT; NMAN; PKCI-1; PRKCNH1
<b>Note:</b>	HINT1 antibody detects endogenous levels of total HINT1 protein.

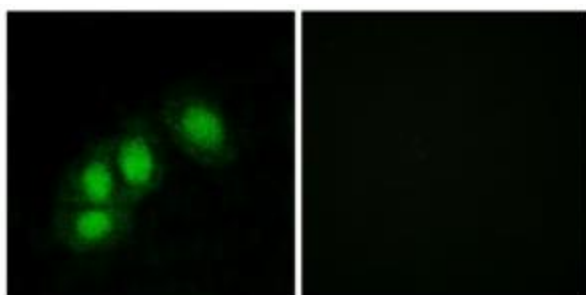


[View online »](#)

## Product images:



Western blot analysis of extracts from Jurkat cells, using HINT1 antibody. The lane on the right is treated with the synthesized peptide.



Immunofluorescence analysis of HeLa cells, using HINT1 antibody. The picture on the right is treated with the synthesized peptide.