

Product datasheet for **TA312902**

GRP78 (HSPA5) Rabbit Polyclonal Antibody

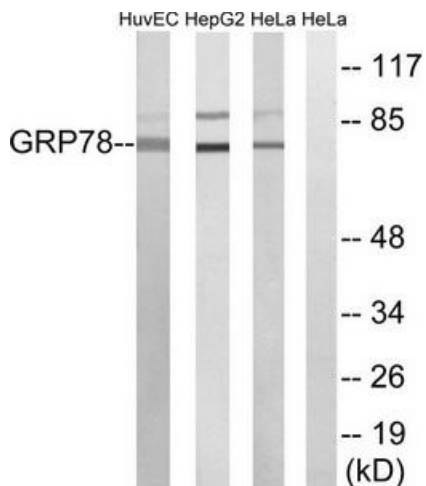
Product data:

Product Type:	Primary Antibodies
Applications:	IF, IHC, WB
Recommended Dilution:	WB: 1:500~1:3000, IHC: 1:50~1:100, IF: 1:100~1:500, ELISA: 1:5000
Reactivity:	Human, Mouse, Rat
Host:	Rabbit
Isotype:	IgG
Clonality:	Polyclonal
Immunogen:	The antiserum was produced against synthesized peptide derived from human GRP78.
Formulation:	Phosphate buffered saline (without Mg ²⁺ and Ca ²⁺), pH 7.4, 150mM NaCl, 0.02% sodium azide and 50% glycerol.
Concentration:	lot specific
Purification:	The antibody was affinity-purified from rabbit antiserum by affinity-chromatography using epitope-specific immunogen.
Conjugation:	Unconjugated
Storage:	Store at -20°C as received.
Stability:	Stable for 12 months from date of receipt.
Gene Name:	heat shock protein family A (Hsp70) member 5
Database Link:	NP_005338 Entrez Gene 14828 Mouse Entrez Gene 25617 Rat Entrez Gene 3309 Human P11021
Synonyms:	BIP; GRP78; HEL-S-89n; MIF2
Note:	GRP78 antibody detects endogenous levels of total GRP78 protein.
Protein Families:	Druggable Genome
Protein Pathways:	Antigen processing and presentation, Prion diseases

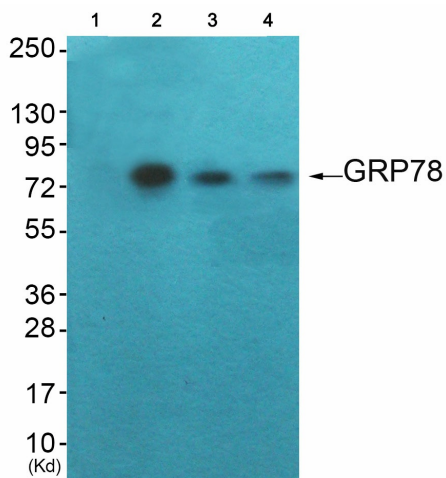


[View online »](#)

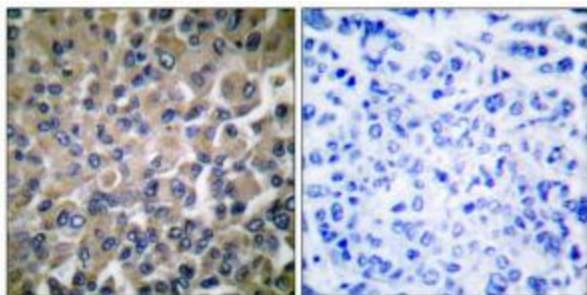
Product images:



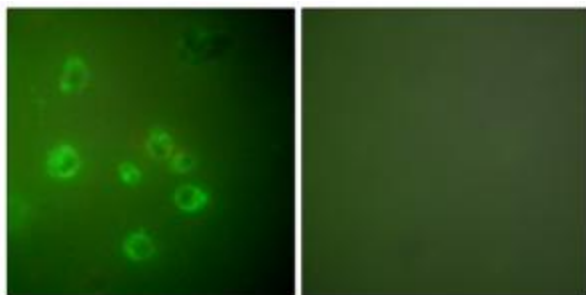
Western blot analysis of extracts from COS7 cells, using GRP78 antibody (#TA312902). The lane on the right is treated with the synthesized peptide.



Western blot analysis of extracts from HuvEc cells (Lane 2), COS7 cells (Lane 3) and JK cells (Lane 4), using GRP78 Antibody. The lane on the left is treated with synthesized peptide.



Immunohistochemical analysis of paraffin-embedded human breast carcinoma tissue using GRP78 antibody (#TA312902). The picture on the right is treated with the synthesized peptide.



Immunofluorescence analysis of COS7 cells, using GRP78 antibody (#TA312902). The picture on the right is treated with the synthesized peptide.