

## Product datasheet for **TA312891**

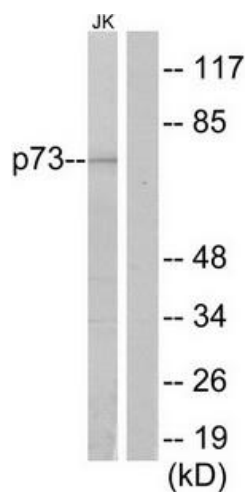
### p73 (TP73) Rabbit Polyclonal Antibody

#### Product data:

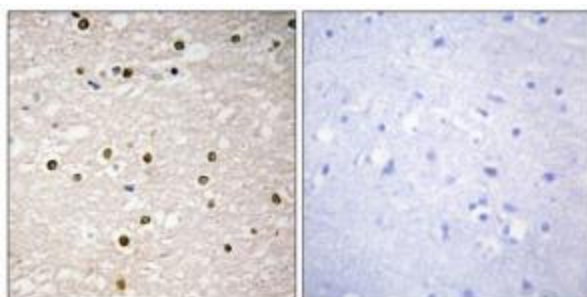
|                       |  |
|-----------------------|--|
| Product Type:         | Primary Antibodies   |
| Applications:         | IHC, WB  |
| Recommended Dilution: | WB: 1:500~1:3000, IHC: 1:50~1:100, ELISA: 1:40000  |
| Reactivity:           | Human  |
| Host:                 | Rabbit   |
| Isotype:              | IgG  |
| Clonality:            | Polyclonal   |
| Immunogen:            | The antiserum was produced against synthesized peptide derived from internal of human p73.   |
| Formulation:          | Phosphate buffered saline (without Mg <sup>2+</sup> and Ca <sup>2+</sup> ), pH 7.4, 150mM NaCl, 0.02% sodium azide and 50% glycerol. |
| Concentration:        | lot specific   |
| Purification:         | The antibody was affinity-purified from rabbit antiserum by affinity-chromatography using epitope-specific immunogen.                |
| Conjugation:          | Unconjugated   |
| Storage:              | Store at -20°C as received.  |
| Stability:            | Stable for 12 months from date of receipt.   |
| Gene Name:            | tumor protein p73  |
| Database Link:        | <a href="#">NP_005418</a><br><a href="#">Entrez Gene 7161 Human</a><br><a href="#">O15350</a>  |
| Synonyms:             | P73  |
| Note:                 | p73 antibody detects endogenous levels of total p73 protein.   |
| Protein Families:     | Druggable Genome, Transcription Factors  |
| Protein Pathways:     | Neurotrophin signaling pathway, p53 signaling pathway  |



[View online »](#)

**Product images:**

Western blot analysis of extracts from Jurkat cells, using p73 antibody. The lane on the right is treated with the synthesized peptide.



Immunohistochemistry analysis of paraffin-embedded human brain tissue using p73 antibody. The picture on the right is treated with the synthesized peptide.