

Product datasheet for **TA312889**

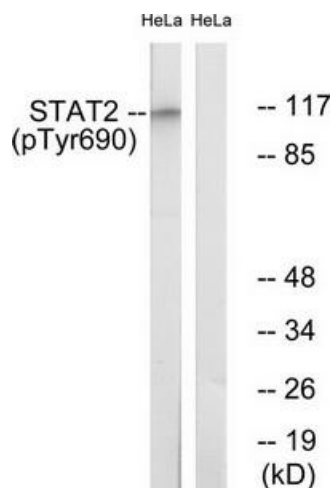
STAT2 Rabbit Polyclonal Antibody

Product data:

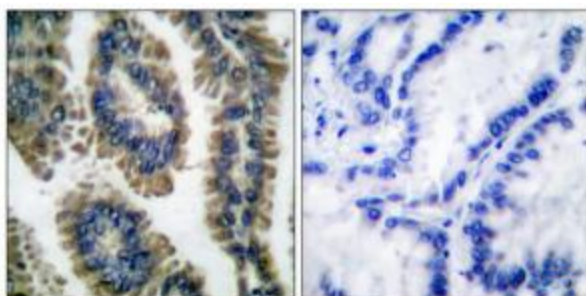
Product Type:	Primary Antibodies
Applications:	IHC, WB
Recommended Dilution:	WB: 1:500~1000, IHC: 1:50~100, ELISA: 1:20000
Reactivity:	Human, Mouse, Rat
Modifications:	Phospho-specific
Host:	Rabbit
Isotype:	IgG
Clonality:	Polyclonal
Immunogen:	The antiserum was produced against synthesized phosphopeptide derived from human STAT2 around the phosphorylation site of tyrosine 690 (R-K-YP-L-K)
Formulation:	Phosphate buffered saline (without Mg ²⁺ and Ca ²⁺), pH 7.4, 150mM NaCl, 0.02% sodium azide and 50% glycerol.
Concentration:	lot specific
Purification:	The antibody was affinity-purified from rabbit antiserum by affinity-chromatography using epitope-specific immunogen.
Conjugation:	Unconjugated
Storage:	Store at -20°C as received.
Stability:	Stable for 12 months from date of receipt.
Gene Name:	signal transducer and activator of transcription 2
Database Link:	NP_005410 Entrez Gene 20847 Mouse Entrez Gene 288774 Rat Entrez Gene 6773 Human P52630
Synonyms:	IMD44; ISGF-3; P113; STAT113
Note:	STAT2 (Phospho-Tyr690) antibody detects endogenous levels of STAT2 only when phosphorylated at tyrosine 690
Protein Families:	Druggable Genome, Transcription Factors
Protein Pathways:	Chemokine signaling pathway, Jak-STAT signaling pathway



[View online »](#)

Product images:


Western blot analysis of extracts from HeLa cells treated with IFN (2500U/ml, 30mins), using STAT2 (Phospho-Tyr690) antibody (#TA312889). The lane on the right is treated with the synthesized peptide.



Immunohistochemical analysis of paraffin-embedded human lung carcinoma tissue using STAT2 (Phospho-Tyr690) antibody (#TA312889). The picture on the right is treated with the synthesized peptide.