

Product datasheet for **TA312880**

GABA B Receptor 2 (GABBR2) Rabbit Polyclonal Antibody

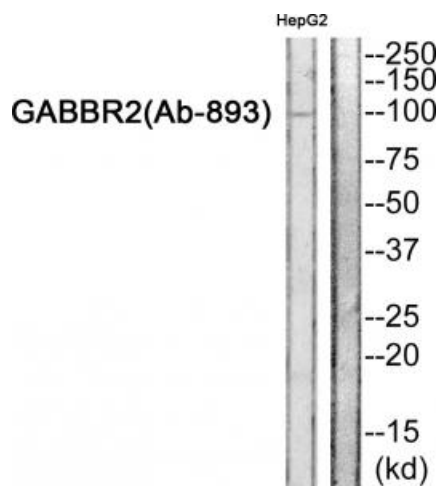
Product data:

Product Type:	Primary Antibodies
Applications:	WB
Recommended Dilution:	WB: 1:500~1:3000, ELISA: 1:10000
Reactivity:	Human, Mouse, Rat
Host:	Rabbit
Isotype:	IgG
Clonality:	Polyclonal
Immunogen:	The antiserum was produced against synthesized peptide derived from Internal of human GABBR2.
Formulation:	Phosphate buffered saline (without Mg ²⁺ and Ca ²⁺), pH 7.4, 150mM NaCl, 0.02% sodium azide and 50% glycerol.
Concentration:	lot specific
Purification:	The antibody was affinity-purified from rabbit antiserum by affinity-chromatography using epitope-specific immunogen.
Conjugation:	Unconjugated
Storage:	Store at -20°C as received.
Stability:	Stable for 12 months from date of receipt.
Gene Name:	gamma-aminobutyric acid type B receptor subunit 2
Database Link:	NP_005449 Entrez Gene 83633 Rat Entrez Gene 242425 Mouse Entrez Gene 9568 Human O75899
Synonyms:	GABABR2; GPR51; GPRC3B; HG20; HRIHFB2099
Note:	GABBR2 (Ab-893) Antibody detects endogenous levels of total GABBR2 protein.
Protein Families:	Druggable Genome, GPCR, Transmembrane
Protein Pathways:	Neuroactive ligand-receptor interaction



[View online »](#)

Product images:



Western blot analysis of extracts from HepG2 cells, using GABBR2 (Ab-893) Antibody. The lane on the right is treated with the synthesized peptide.