

Product datasheet for **TA312879**

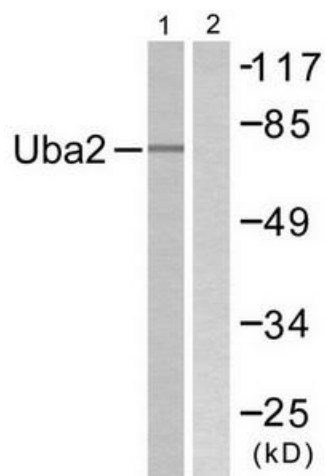
UBA2 Rabbit Polyclonal Antibody

Product data:

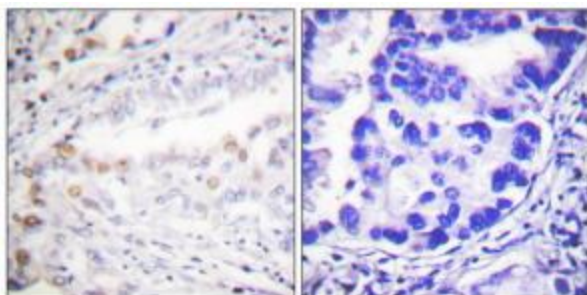
Product Type:	Primary Antibodies
Applications:	IHC, WB
Recommended Dilution:	WB: 1:500~1:3000, IHC: 1:50~1:100, ELISA: 1:5000
Reactivity:	Human
Host:	Rabbit
Isotype:	IgG
Clonality:	Polyclonal
Immunogen:	The antiserum was produced against synthesized peptide derived from C-terminal of human Uba2.
Formulation:	Phosphate buffered saline (without Mg ²⁺ and Ca ²⁺), pH 7.4, 150mM NaCl, 0.02% sodium azide and 50% glycerol.
Concentration:	lot specific
Purification:	The antibody was affinity-purified from rabbit antiserum by affinity-chromatography using epitope-specific immunogen.
Conjugation:	Unconjugated
Storage:	Store at -20°C as received.
Stability:	Stable for 12 months from date of receipt.
Gene Name:	ubiquitin like modifier activating enzyme 2
Database Link:	NP_005490 Entrez Gene 10054 Human Q9UBT2
Synonyms:	ARX; HRIHFB2115; SAE2
Note:	Uba2 antibody detects endogenous levels of total Uba2 protein.
Protein Pathways:	Ubiquitin mediated proteolysis



[View online »](#)

Product images:

Western blot analysis of extracts from 293 cells, treated with UV (5mins), using Uba2 antibody. The lane on the right is treated with the synthesized peptide.



Immunohistochemistry analysis of paraffin-embedded human lung carcinoma tissue using Uba2 antibody. The picture on the right is treated with the synthesized peptide.